



City Hall Public Restrooms Renovation

526 C Street,
Marysville, CA 95901
Issue Date: June 3, 2026

Addendum #1 – City Hall Public Restrooms Demolition and Renovation Updated Plans

Project: City Hall Public Restrooms Demolition and Renovation

To: Prospective Bidding General Contractors

This notice serves to inform all bidders that there are updated Restroom Demolition and Renovation plans for the City Hall Public Restrooms Renovation project.

- **New Set Added: City of Marysville Restroom Renovations 05-28-2026**

All other terms, conditions, and requirements of the bid documents remain unchanged unless modified by written addendum.

Bidders are responsible for acknowledging receipt of this notice in their bid proposal.

If you have any questions, please contact our office.

Jerry Handy

CITY OF MARYSVILLE CITY HALL

PUBLIC RESTROOMS DEMOLITION AND RENOVATION PLANS

526 C STREET, MARYSVILLE, CALIFORNIA 95901



SHEET INDEX

	TITLE SHEET
1	SCOPE OF WORK AND EXISTING FIXTURE LEGEND
2	EXISTING FLOOR PLANS
3	DEMOLITION PLAN
4	NEW RESTROOM FLOOR PLANS
5	KEY AND GENERAL NOTES
6	ACCESSIBILITY DETAILS
7	ACCESSIBILITY DETAILS
8	PLUMBING FIXTURE SPECIFICATIONS
9	PLUMBING FIXTURE SPECIFICATIONS
A4.51	ELLIS ARCHITECTS - MEN'S RR PLAN & INTR. ELEVATIONS
A4.52	ELLIS ARCHITECTS - WOMEN'S RR PLAN & INTR. ELEVATIONS
A3.51	ELLIS ARCHITECTS - FINISH SCHEDULE
A8.31	ELLIS ARCHITECTS - INTERIOR DETAILS

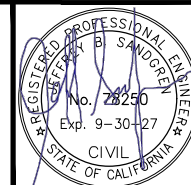
GENERAL NOTES

- CONSTRUCTION SHALL CONFORM TO THE REQUIREMENTS OF THE FOLLOWING CODES AND ORDINANCES:
 2025 CALIFORNIA BUILDING CODE
 2025 CALIFORNIA MECHANICAL CODE
 2025 CALIFORNIA PLUMBING CODE
 2025 CALIFORNIA ELECTRICAL CODE
 2025 CALIFORNIA FIRE CODE
 2025 CALIFORNIA GREEN BUILDING STANDARDS CODE
 2025 CALIFORNIA ENERGY CODE
 2025 CALIFORNIA REFERENCED STANDARDS CODE
 APPLICABLE LOCAL CODES AND ORDINANCES
- DRAWINGS MAY NOT ALWAYS BE TO SCALE. NOTED DIMENSIONS SHALL TAKE PRECEDENCE OVER SCALED DIMENSIONS
- DISCREPANCIES IN THE DRAWINGS SHALL BE BROUGHT TO THE ATTENTION OF THE DESIGNER AND OR ENGINEER PRIOR TO PROCEEDING WITH CONSTRUCTION
- NOTES THROUGHOUT THIS SET OF PLANS SHALL APPLY TO SHEETS, WHERE NOTE IS APPLICABLE
- DRAWINGS INDICATE GENERAL AND TYPICAL DETAILS FOR CONSTRUCTION. WHERE CONDITIONS ARE NOT SPECIFICALLY SHOWN BUT ARE OF SIMILAR CHARACTER TO DETAILS SHOWN, SIMILAR DETAILS OF CONSTRUCTION SHALL APPLY

CITY HALL REPRESENTATIVE CONTACT INFO:

JERRY HANDY
4JCON, LLC
530-682-6129
jerry@4jcon.com

DNC DENNIS C. NELSON
COMPANY
BUILDING DESIGN, LAND USE PLANNING
AND CONSTRUCTION MANAGEMENT
120 N. AUBURN STREET, SUITE 200
GRASS VALLEY, CA 95945
Bus: (530) 674-7501 Fax: (530) 674-7503
Email: dnelson@syix.com



J.B.
SANDGREN ENGINEERING
120 N. AUBURN STREET, SUITE 200
GRASS VALLEY, CALIFORNIA 95945
OFFICE (530) 788-8794 • FAX (530) 742-1331
EMAIL: JEFF@JBSANDGREN.COM

Job No.:
24-3352R
Date:
05/27/2026
Scale:
NONE

Drawn By:
D.NELSON
Sheet No.:
TITLE SHEET

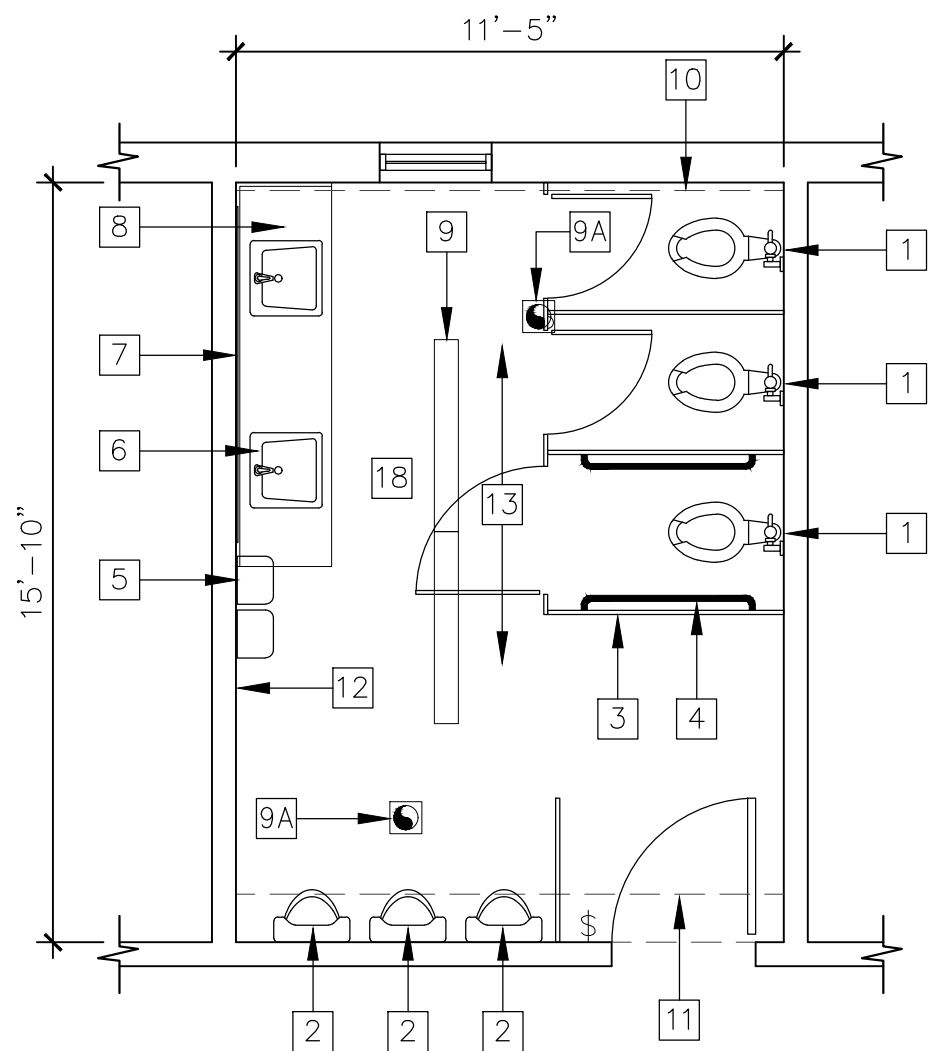
Revisions	
△	
△	

SCOPE OF WORK

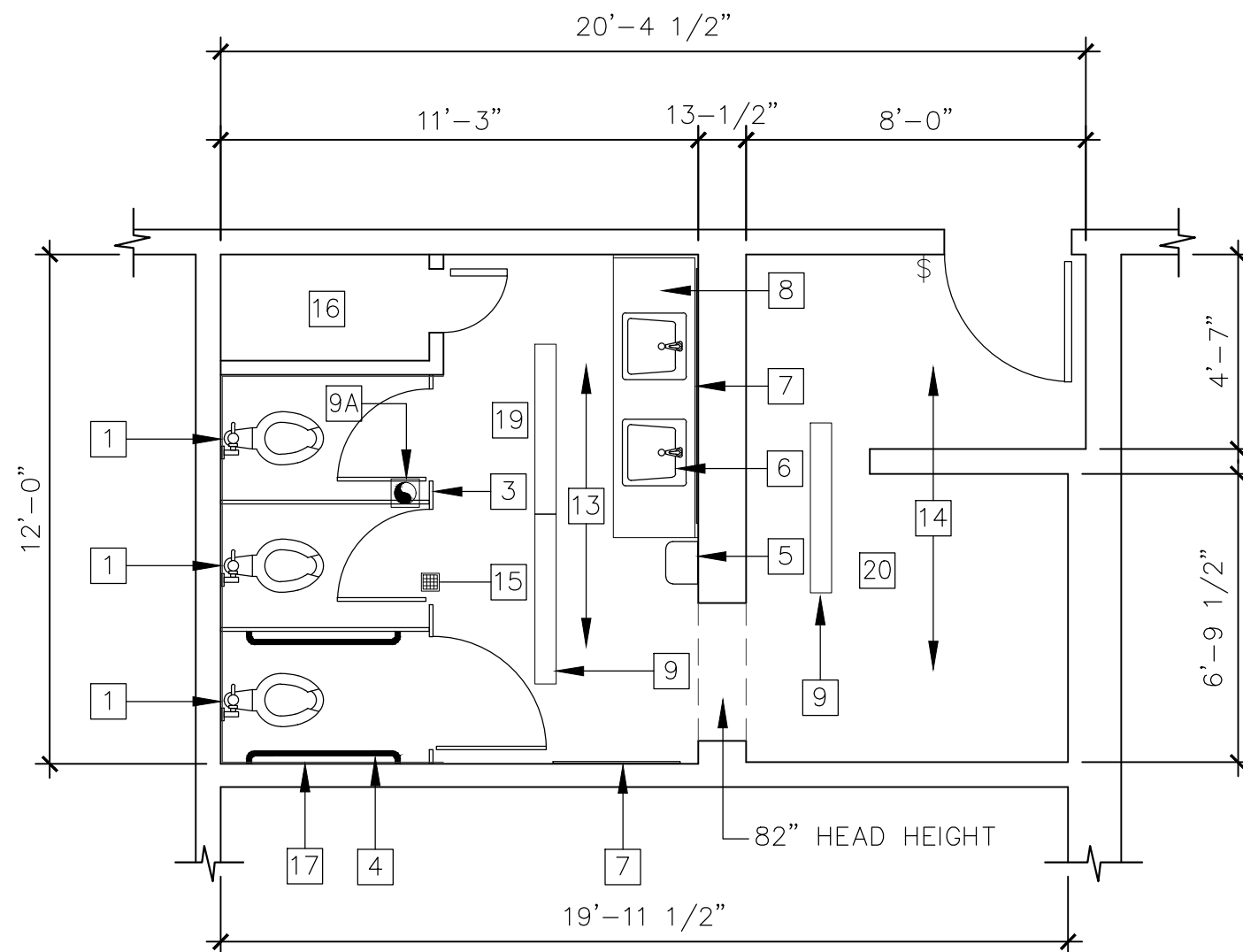
1. REMODEL EXISTING MEN AND WOMEN PUBLIC RESTROOMS INCLUDING BUT LIMITED TO ACCESSIBLE WATER CLOSETS, ENCLOSURES, URINALS, SINKS & COUNTERTOPS AND ACCESSORIES. NEW PLUMBING FIXTURES, PARTITIONS, ETC. AS NOTED. NEW ELECTRICAL INCLUDING SWITCHES AND LIGHT FIXTURES
2. REMOVE, REPLACE AND/OR UPGRADE WASTE AND SUPPLY PLUMBING FOR NEW PLUMBING FIXTURES AND ACCESSORIES
3. REMOVE AND REPLACE TILE FLOORING AND WAINSCOT AS INDICATED IN PLANS
4. REMOVE AND REPLACE RESTROOM ENTRY DOOR HARDWARE AND CLOSER FOR ACCESSIBILITY COMPLIANCE
5. REPAIR/REPLACE EXISTING WALL AND FLOOR SUBSTRATES WHERE REMOVAL OF EXISTING FIXTURES, ETC. CREATES A HOLE OR VOID. MATCH THICKNESS AND MATERIAL TYPE OF ADJACENT SUBSTRATE. PROVIDE SOLID BLOCKING AT NEW SUBSTRATE PERIMETER
6. REMOVE AND REPLACE SURFACE MOUNT LIGHT FIXTURES WITH NEW LED FIXTURES. REMOVE AND REPLACE WALL SWITCH WITH COMPLIANT MOTION SENSOR, AUTO/MANUAL ON/OFF (per CEC-BEES SECTION 130.1)

EXISTING FIXTURE & MATERIAL LEGEND

- | | |
|----|--|
| 1 | FLOOR MOUNT FLUSH VALVE WATER CLOSET |
| 2 | FLOOR MOUNT FLUSH VALVE URINAL |
| 3 | FLOOR/WALL MOUNT METAL PARTITION |
| 4 | GRAB BARS |
| 5 | PAPER TOWEL DISPENSER (2- MEN, 1- WOMEN) |
| 6 | FLUSH MOUNT SINK (2) |
| 7 | WALL MOUNT MIRROR |
| 8 | PLASTIC LAMINATE COUNTERTOP (OPEN BELOW) |
| 9 | SURFACE MOUNT LIGHT FIXTURE (3) |
| 9A | CEILING MOUNT EXHAUST FAN (3) |
| 10 | 2"X12" FURRED SOFFIT |
| 11 | 12"X12" DUCT SOFFIT |
| 12 | 54" TILE WAINSCOT AT WALL PERIMETER |
| 13 | TILE FLOOR |
| 14 | CARPET TILE FLOOR |
| 15 | FLOOR DRAIN |
| 16 | STORAGE CLOSET |
| 17 | TILE FULL HEIGHT (3- WALLS) |
| 18 | 8'-6" CEILING HEIGHT |
| 19 | 7'-4" CEILING HEIGHT |
| 20 | 8'-4" CEILING HEIGHT |



RESTROOM - MEN
EXISTING CONDITION



RESTROOM - WOMEN
EXISTING CONDITION

DNC DENNIS C. NELSON
COMPANY
BUILDING DESIGN, LAND USE PLANNING
AND CONSTRUCTION MANAGEMENT
120 N. AUBURN STREET, SUITE 200
GRASS VALLEY, CA 95945
Bus: (530) 674-7501 Fax: (530) 674-7503
Email: dnelson@svix.com

CITY HALL PUBLIC RESTROOM RENOVATIONS
CITY OF MARYSVILLE
526 C STREET, MARYSVILLE, CA 95901



J.B.
SANDGREN ENGINEERING
120 N. AUBURN STREET, SUITE 200
GRASS VALLEY, CALIFORNIA 95945
OFFICE (530) 788-8794 • FAX (530) 742-1331
EMAIL: JEFF@JBSANDGREN.COM

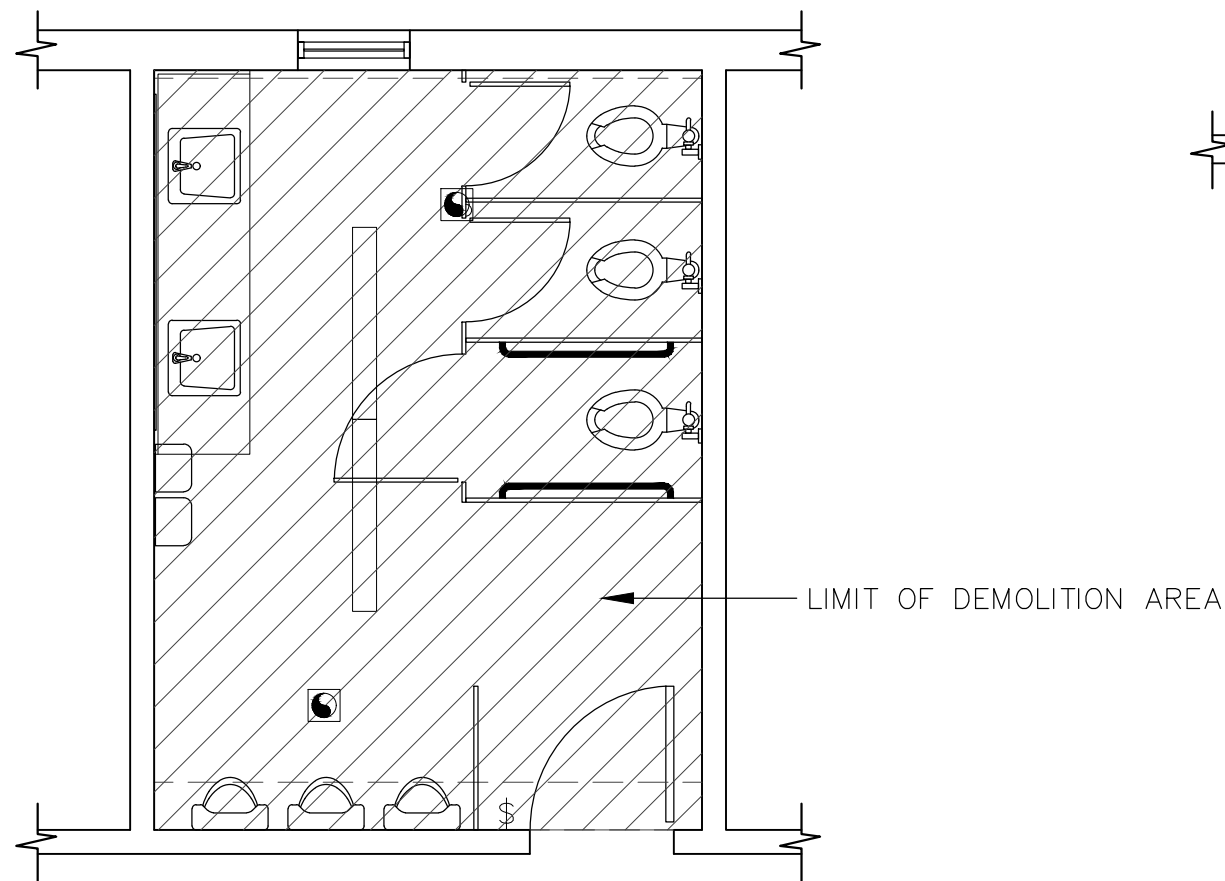
Job No.:
24-3352R
Date:
05/27/2026
Scale:
1/4"=1'-0"

Drawn By:
D.NELSON
Sheet No.:
2 OF 9

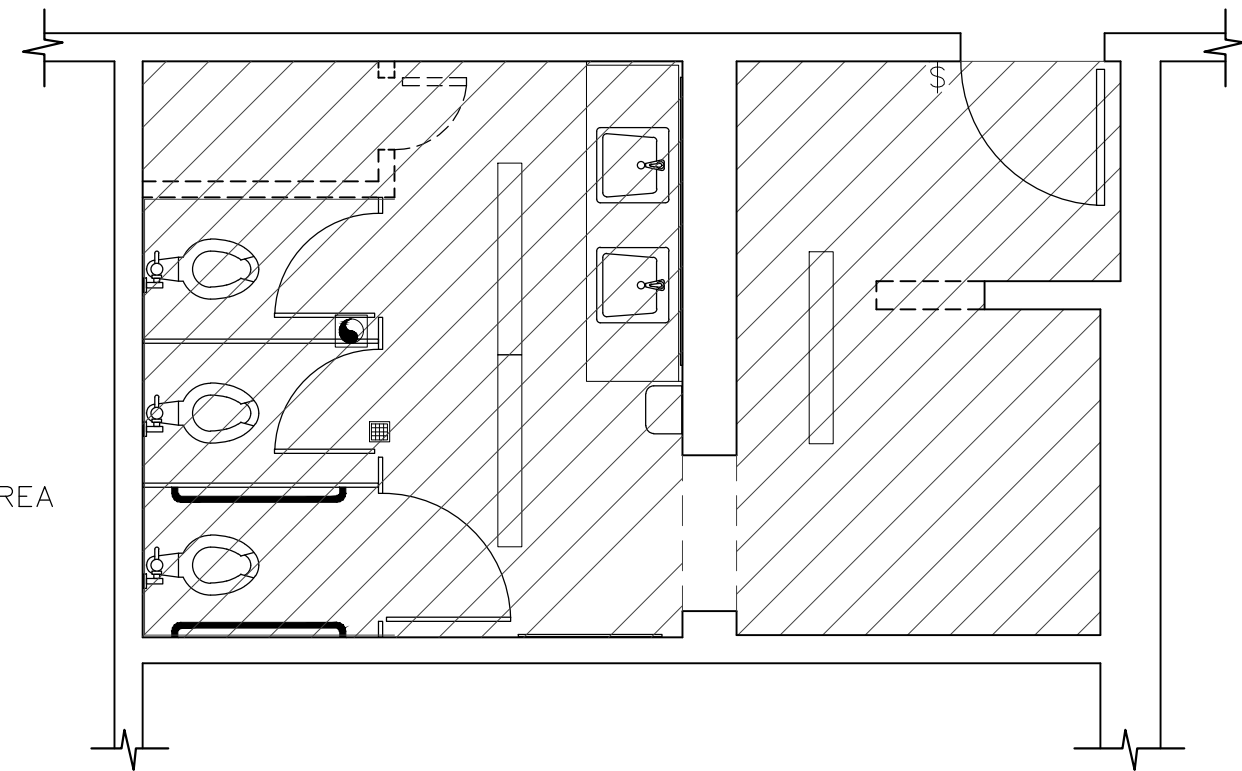
Revisions	
△	
△	

DEMOLITION NOTES

1. REMOVE ALL EXISTING PLUMBING FIXTURES, PARTITIONS, ACCESSORIES, ETC.
2. REMOVE ALL TILE AND CARPETING AT FLOORS AND ALL TILE AT WALLS
3. REMOVE ALL LIGHT FIXTURES, SWITCHES AND EXHAUST FANS
4. REMOVE FLOOR DRAIN IN WOMEN'S RESTROOM AND PLUG WASTE DRAIN LINE
5. REMOVE CLOSET FRAMING, SHELVING, ETC. IN WOMEN'S RESTROOM
6. EXISTING ELECTRICAL CIRCUITS ARE TO BE PROTECTED DURING DEMOLITION FOR REUSE
7. EXISTING WATER (HOT AND COLD SUPPLY) TO BE PROTECTED DURING DEMOLITION FOR REUSE
8. EXISTING SEWER (WASTE DRAIN AND VENTS) TO BE PROTECTED DURING DEMOLITION FOR REUSE
9. EXISTING SUPPLY AIR AND MECHANICAL SOFFITS TO REMAIN AND BE PROTECTED
10. EXISTING ADJACENT HALLWAY FLOOR, WALLS AND CEILING TO BE PROTECTED DURING DEMOLITION



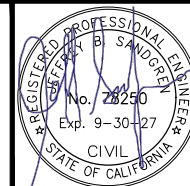
RESTROOM - MEN
DEMOLITION PLAN



RESTROOM - WOMEN
DEMOLITION PLAN

DN
CC
DENNIS C. NELSON
COMPANY
BUILDING DESIGN, LAND USE PLANNING
AND CONSTRUCTION MANAGEMENT
120 N. AUBURN STREET, SUITE 200
GRASS VALLEY, CA 95945
Bus: (530) 674-7501 Fax: (530) 674-7503
Email: dnelson@syix.com

CITY HALL PUBLIC RESTROOM RENOVATIONS
CITY OF MARYSVILLE
526 C STREET, MARYSVILLE, CA 95901

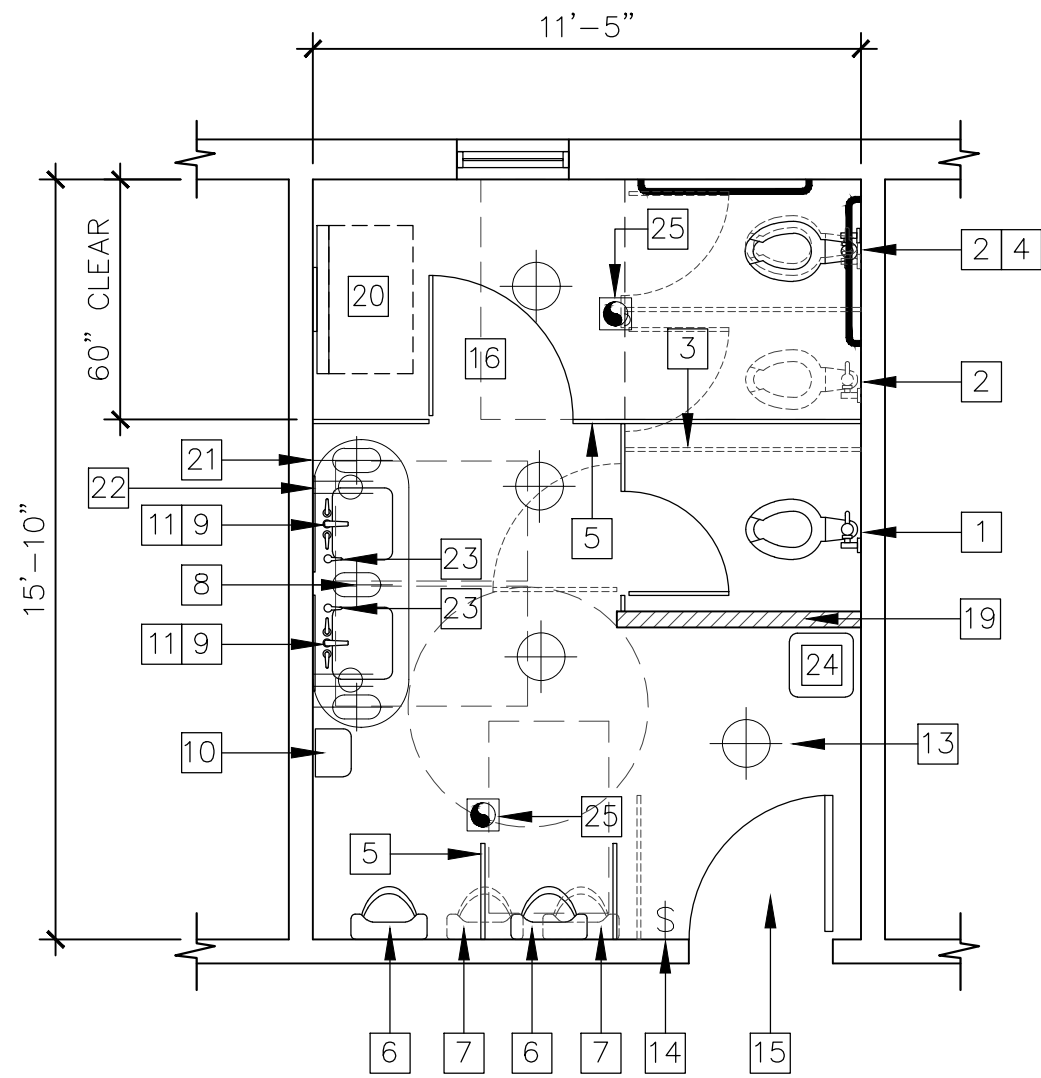


J.B.
SANDGREN ENGINEERING
120 N. AUBURN STREET, SUITE 200
GRASS VALLEY, CALIFORNIA 95945
OFFICE (530) 788-8794 • FAX (530) 742-1331
EMAIL: JEFF@JBSANDGREN.COM

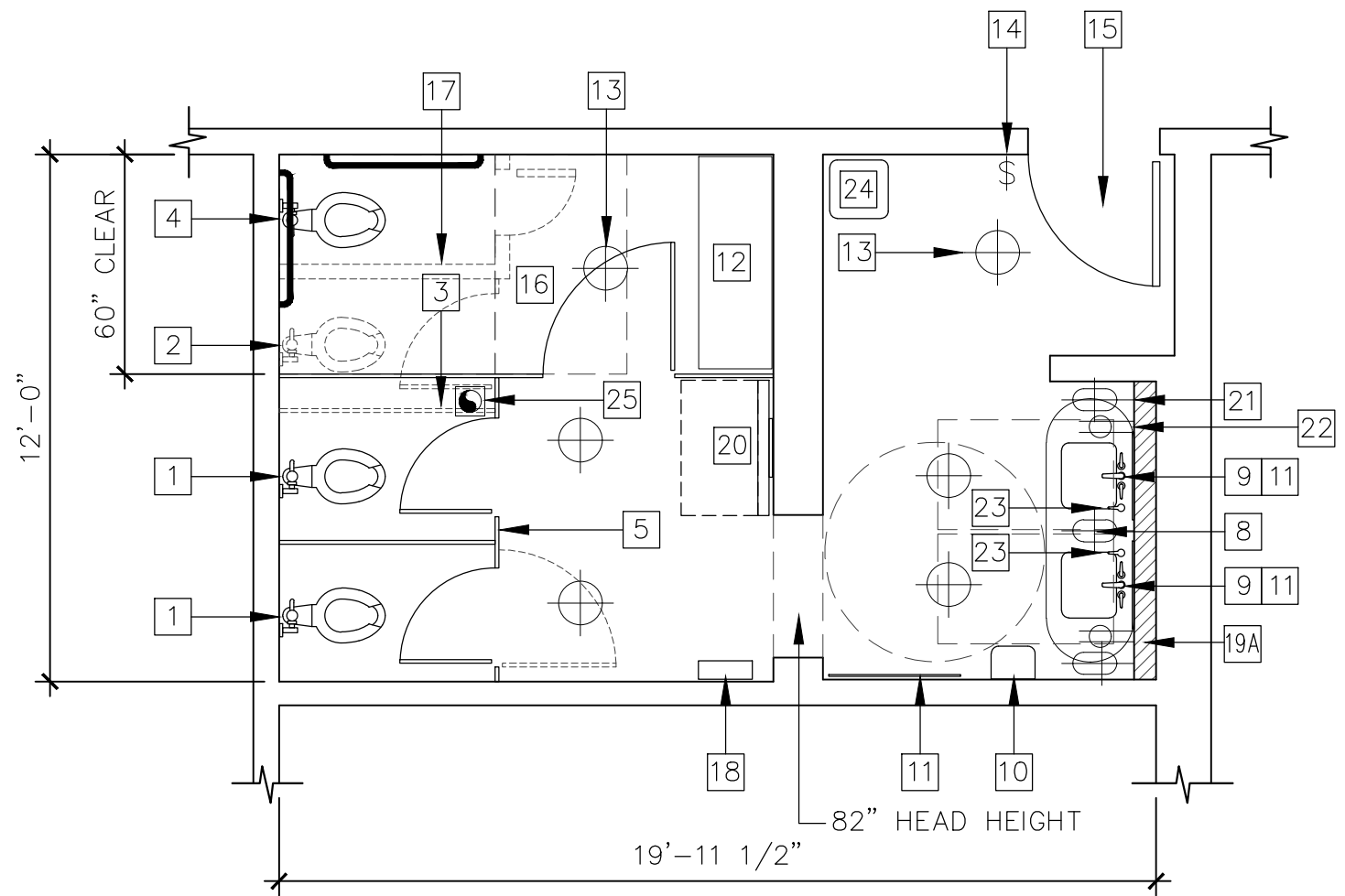
Job No.:
24-3352R
Date:
05/27/2026
Scale:
1/4"=1'-0"

Drawn By:
D.NELSON
Sheet No.:
3 OF 9

Revisions	
△	
△	



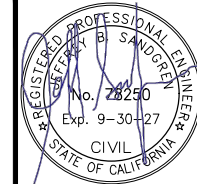
RESTROOM - MEN
NEW LAYOUT



RESTROOM - WOMEN
NEW LAYOUT

DN DENNIS C. NELSON
COMPANY
BUILDING DESIGN, LAND USE PLANNING
AND CONSTRUCTION MANAGEMENT
120 N. AUBURN STREET, SUITE 200
GRASS VALLEY, CA 95945
Bus: (530) 674-7501 Fax: (530) 674-7503
Email: dnelson@syix.com

CITY HALL PUBLIC RESTROOM RENOVATIONS
CITY OF MARYSVILLE
526 C STREET, MARYSVILLE, CA 95901



J.B.
SANDGREN ENGINEERING
120 N. AUBURN STREET, SUITE 200
GRASS VALLEY, CALIFORNIA 95945
OFFICE (530) 788-8794 • FAX (530) 742-1331
EMAIL: JEFF@JBSANDGREN.COM

Job No.:
24-3352R
Date:
05/27/2026
Scale:
1/4"=1'-0"

Drawn By:
D.NELSON
Sheet No.:
4 OF 9

Revisions	
△	
△	

KEY NOTES

- 1 REMOVE & REPLACE FLOOR MOUNT FLUSH VALVE WATER CLOSET
- 2 REMOVE FLOOR MOUNT FLUSH VALVE WATER
- 3 REMOVE FLOOR/WALL MOUNT METAL PARTITION
- 4 NEW FLOOR MOUNT WATER CLOSET
- 5 NEW WALL MOUNT PARTITIONS
SCRATCH RESISTIVE (SS, POWDER COATED METAL OR PHENOLIC)
24" DEEP WALL MOUNT BETWEEN URINALS
- 6 NEW WALL MOUNT URINALS
- 7 REMOVE EXISTING IN-FLOOR URINALS
- 8 WALL MOUNT COUNTERTOP (OPEN BELOW). SEE INTERIOR DESIGN PLANS
- 9 NEW SINK WITH ACCESSIBLE FAUCET
- 10 NEW WALL MOUNT PAPER TOWEL DISPENSER
- 11 NEW WALL HUNG MIRROR
- 12 FULL HEIGHT LOCKABLE CASEWORK W/ ADJUSTABLE SHELVING
- 13 NEW LED SURFACE MOUNT LIGHT FIXTURE. SEE INTERIOR DESIGN PLANS
MEN: 4 TOTAL
WOMEN: 6 TOTAL
- 14 NEW COMPLIANT WALL SWITCH (MOTION W/ AUTO ON/OFF)
- 15 NEW DOOR WITH COMPLIANT HARDWARE AND CLOSER
SEE G.N. #3 AND #4
- 16 NEW COMPLIANT STALL, FIXTURE AND ACCESSORIES
- 17 REMOVED STORAGE CLOSET (SEE DEMO PLAN)
- 18 NEW SANITARY NAPKIN DISPENSER (VERIFY LOCATION)
- 19 NEW 4" WALL
- 19A NEW 6" WALL
- 20 DIAPER CHANGING STATION (SURFACE MOUNT)
KOALA KARE KB300-05 (WHITE GRANITE) OR EQUAL
FIELD VERIFY WALL CLEARANCE IN WOMEN'S
- 21 NEW SURFACE MOUNT WALL SCONCE. SEE INTERIOR DESIGN PLANS
MEN: 3 TOTAL
WOMEN: 3 TOTAL
- 22 120V GFCI DUPLEX RECEPTACLE. SEE INTERIOR DESIGN PLANS
INSTALL BELOW AND IN-LINE WITH WALL SCONCE
MEN: 2 TOTAL
WOMEN: 2 TOTAL
- 23 120V GFCI SINGLE-PLEX RECEPTACLE. MOUNT UNDER COUNTER FOR
ELECTRIC SOAP DISPENSER (1 PER EACH SINK). SEE INTR. DESIGN PLANS
- 24 32 GAL. TRASH RECEPTACLE
- 25 NEW CEILING MOUNT EXHAUST FAN
SEE K.N. #7

ACCESSIBILITY NOTES

- GROUND AND FLOOR SURFACES:
GROUND AND FLOOR SURFACES ALONG ACCESSIBLE ROUTES AND IN ACCESSIBLE ROOMS SHALL BE STABLE, FIRM AND SLIP-RESISTANT
- CHANGES IN LEVEL:
CHANGES IN LEVEL UP TO 1/4" MAY BE VERTICAL AND WITHOUT EDGE TREATMENT
CHANGES IN LEVEL BETWEEN 1/4 AND 1/2 IN SHALL BE BEVELED WITH A SLOPE NO GREATER THAN 1:2
CHANGES IN LEVEL GREATER THAN 1/2 in. SHALL BE ACCOMPLISHED BY MEANS OF A RAMP
- LOCATION OF ACCESSIBLE ROUTES:
AT LEAST ONE ACCESSIBLE ROUTE WITHIN THE BOUNDARY OF THE SITE SHALL BE PROVIDED FROM ACCESSIBLE PARKING AND PASSENGER LOADING ZONES AND PUBLIC STREETS OR SIDEWALKS TO THE ACCESSIBLE BUILDING ENTRANCE THEY SERVE
AT LEAST ONE ACCESSIBLE ROUTE SHALL CONNECT ACCESSIBLE BUILDINGS FACILITIES, ELEMENTS AND SPACES THAT ARE ON THE SAME SITE
THE MINIMUM CLEAR WIDTH OF AN ACCESSIBLE ROUTE SHALL BE 36 in.
WALKS, HALLS, CORRIDORS OR OTHER CIRCULATION SPACES SHALL HAVE A 80 INCH MINIMUM CLEAR HEAD ROOM

GENERAL NOTES

1. ALL INTERIOR FINISHES, PLUMBING & LIGHTING FIXTURES, DOOR & HARDWARE AND ACCESSORIES NOTED, BUT NOT SPECIFIED IN THIS PLAN SET IS BEING SPECIFIED BY ELLIS ARCHITECTS, INC.
2. ALL FIXTURES, HARDWARE, FLOORING AND ACCESSORIES SHALL BE ADA COMPLAINT WHERE REQUIRED BY CODE
3. NEW SOLID CORE WOOD DOOR AND JAMB TO MATCH EXISTING STYLE, TEXTURE AND COLOR OR PROVIDE SAMPLE FOR ANY PROPOSED DEVIATION. REMOVE AND REPLACE CASINGS OR PROVIDE MATCHING NEW CASINGS. FIELD VERIFY SUFFICIENT SUPPORT BLOCKING FOR DOOR AND HARDWARE INSTALLATION AND ADD OR REPLACE AS NECESSARY TO PROPERLY INSTALL DOOR AND HARDWARE. EXISTING ADJACENT WALL FINISHES SHALL BE PROTECTED DURING REPLACEMENT. ANY WALL FINISH TOUCH-UP SHALL MATCH ORIGINAL PRE-INSTALLATION APPEARANCE
4. NEW DOOR HARDWARE INCLUDING PUSH PLATE, INTERIOR HANDLE, KICK PLATE, HINGES DOOR CLOSER, ETC. TO MATCH EXISTING COLOR AND STYLE. PROVIDE MANUFACTURE'S SPECIFICATIONS FOR APPROVAL
5. CONTRACTOR TO VERIFY WITH CITY REPRESENTATIVE TYPE, COLOR AND FINISH OF SWITCHES, RECEPTACLES, COVER PLATES, ETC. TO BE INSTALLED
6. CONTRACTOR TO BRING TO THE ATTENTION OF THE CITY REPRESENTATIVE ANY ISSUES WITH THE REUSE AND CONNECTING TO EXISTING ELECTRICAL CIRCUITS, WASTE & SUPPLY PLUMBING DURING DEMOLITION PROCESS AND PRIOR TO START OF NEW RENOVATIONS
7. LOCATE NEW FAN IN CEILING AT EXISTING FAN LOCATION. FIELD VERIFY OPENING AND MODIFY AS REQUIRED. REUSE EXISTING EXHAUST DUCT TO EXTERIOR. FAN TO BE SWITCHED WITH LIGHTS. MATCH AIRFLOW FROM EXISTING EXHAUST FAN TO NEW EXHAUST FAN. REUSE EXISTING POWER AND UPGRADE BOX/CONNECTION AS REQUIRED BY CODE

DN
DENNIS C. NELSON
COMPANY
BUILDING DESIGN, LAND USE PLANNING
AND CONSTRUCTION MANAGEMENT
120 N. AUBURN STREET, SUITE 200
GRASS VALLEY, CA 95945
Bus: (530) 674-7501 Fax: (530) 674-7503
Email: dnelson@syix.com

CITY HALL PUBLIC RESTROOM RENOVATIONS
CITY OF MARYSVILLE
526 C STREET, MARYSVILLE, CA 95901

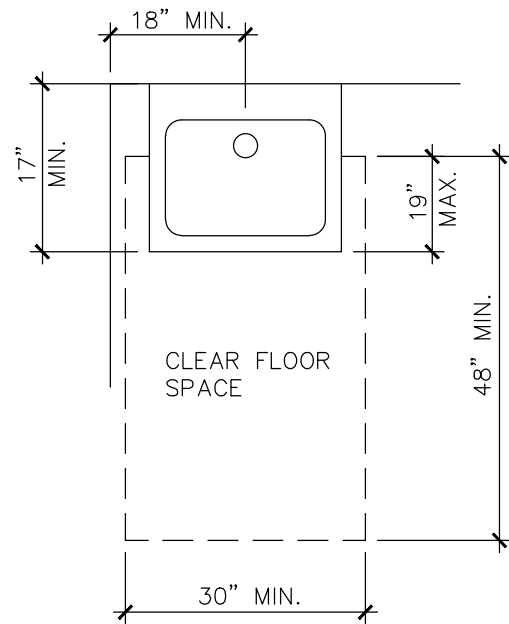


J.B.
SANDGREN ENGINEERING
120 N. AUBURN STREET, SUITE 200
GRASS VALLEY, CALIFORNIA 95945
OFFICE (530) 788-8794 • FAX (530) 742-1331
EMAIL: JEFF@JBSANDGREN.COM

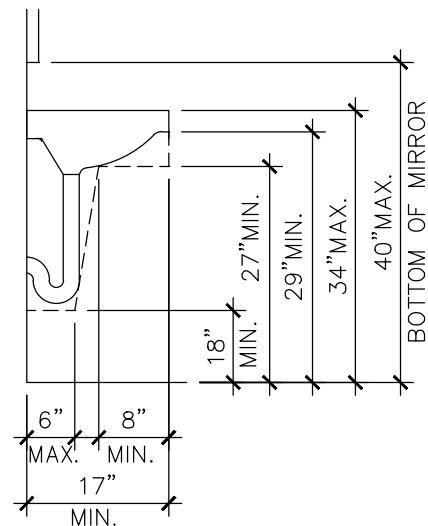
Job No.:
24-3352R
Date:
05/27/2026
Scale:
NONE

Drawn By:
D.NELSON
Sheet No.:
5 OF 9

Revisions	
△	
△	

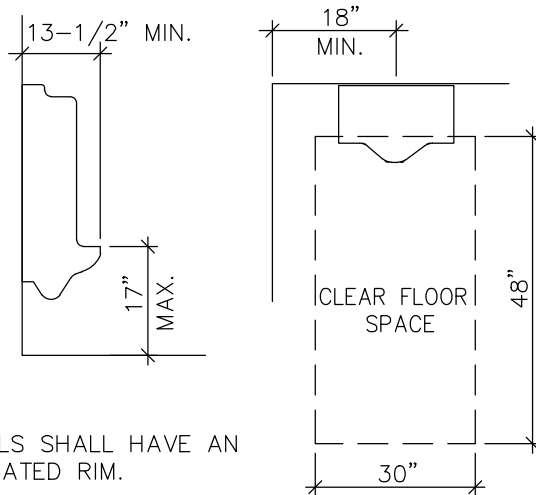


PLAN VIEW



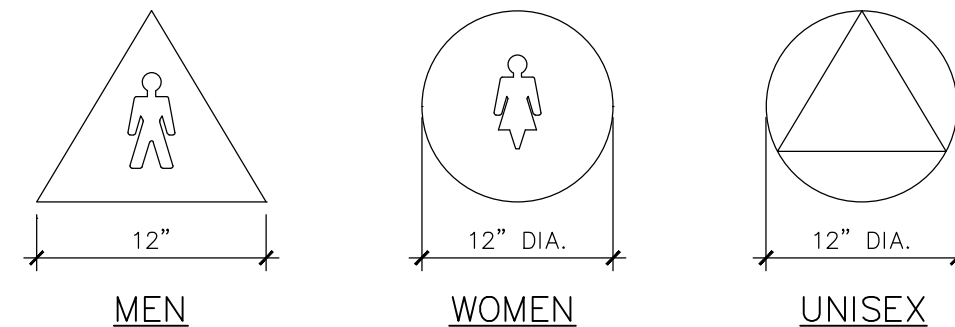
SECTION

CLEAR SPACE AT LAVATORY



NOTE: URINALS SHALL HAVE AN ELONGATED RIM.

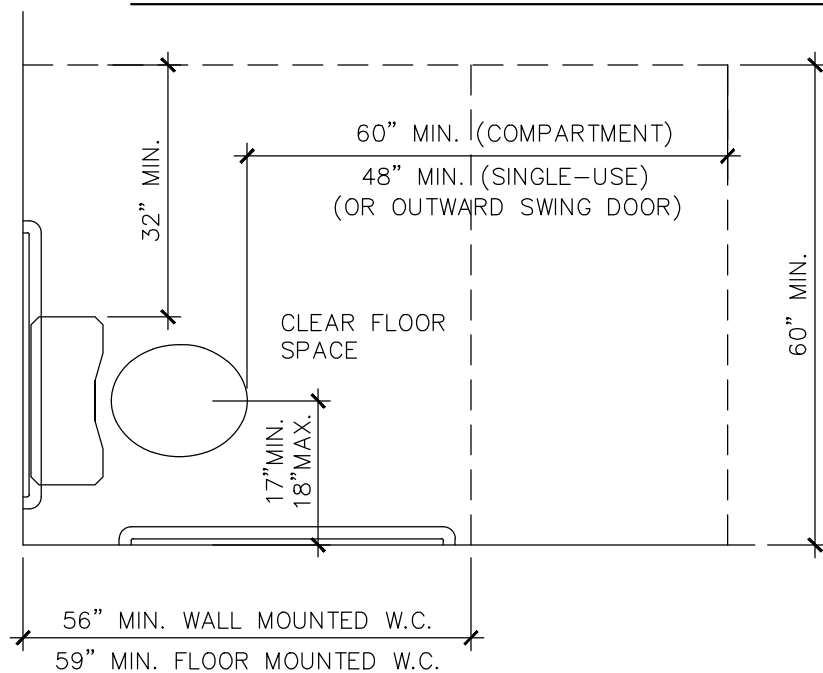
URINAL ACCESSIBILITY



MENS SYMBOL SHALL BE A EQUILATERAL TRIANGLE 1/4" THICK W/ EDGES 12" LONG AND A VERTEX POINTING UPWARD. WOMENS SYMBOL SHALL BE A CIRCLE 1/4" THICK AND 12" DIAMETER. UNISEX FACILITIES SHALL BE IDENTIFIED BY A CIRCLE 12" IN DIAMETER W/ A TRIANGLE SUPERIMPOSED ON THE CIRCLE WITHIN THE 12" DIAMETER. THESE GEOMETRIC SYMBOLS SHALL BE CENTERED ON THE DOOR AT A HEIGHT OF 60" AND THEIR COLOR AND CONTRAST SHALL BE DISTINCTLY DIFFERENT FROM THE COLOR AND CONTRAST OF THE DOOR.

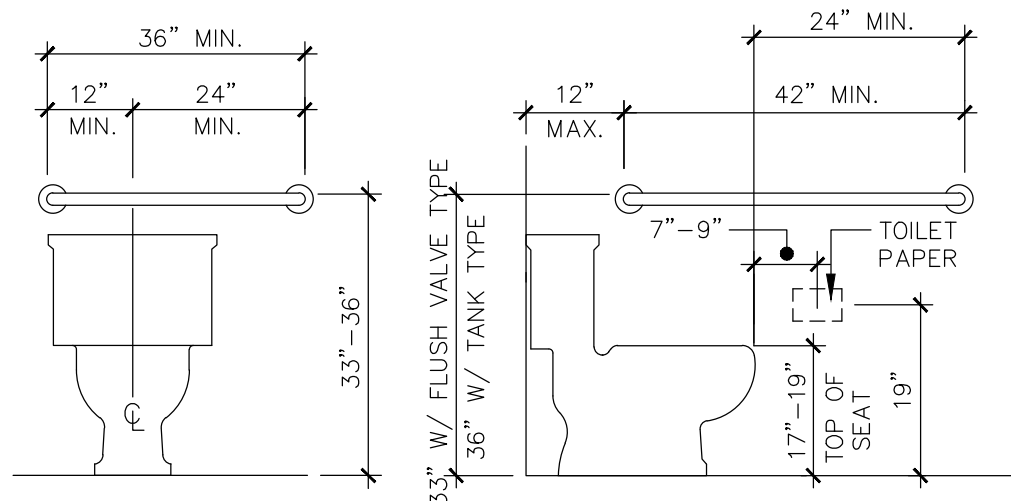
IN ADDITION, PROVIDE A SIGN IN BRAILLE INCLUDING INTERNATIONAL MEN AND WOMEN SYMBOL, INTERNATIONAL ACCESSIBILITY SYMBOL (6" MIN. HEIGHT) AT THE STRIKE SIDE OF THE DOOR, 60" ABOVE FINISH FLOOR AND 2" FROM LATCH SIDE OF DOOR. BRAILLE SHALL BE CONTRACTED GRADE 2 W/ DOTS 1/10 INCH ON CENTER EACH CELL WITH 2/10 INCH SPACE BETWEEN CELLS. DOTS SHALL BE RAISED 1/40 INCH ABOVE BACKGROUND

RESTROOM SIGNAGE



PLAN VIEW

NOTE: GRAB BAR DIMENSIONS MAY BE REVERSED ON EITHER SIDE OF WATER CLOSET



REAR WALL

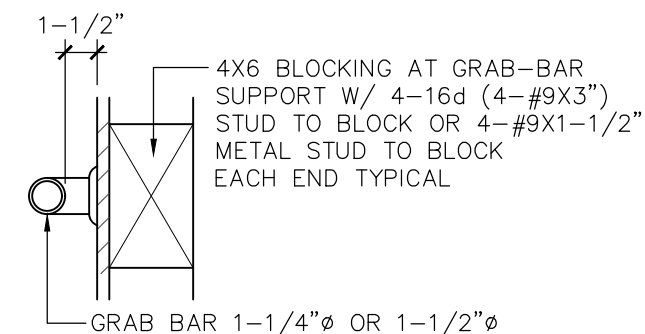
SIDE WALL

WATER CLOSET ACCESSIBILITY

FLUSH CONTROLS SHALL BE HAND OPERATED OR AUTOMATIC AND SHALL BE OPERABLE WITH ONE HAND AND SHALL NOT REQUIRE TIGHT GRASPING, PINCHING, OR TWISTING OF THE WRIST

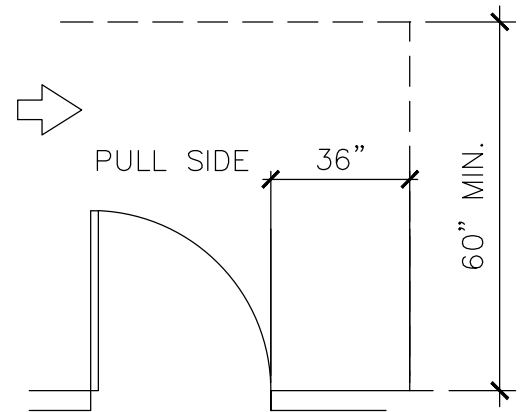
THE FORCE REQUIRED TO ACTIVATE CONTROLS SHALL BE NO GREATER THAN 5 LBS.

CONTROLS SHALL BE MOUNTED ON THE WIDE SIDE OF THE TOILET AND SHALL BE NO MORE THAN 44 in. ABOVE THE FINISHED FLOOR

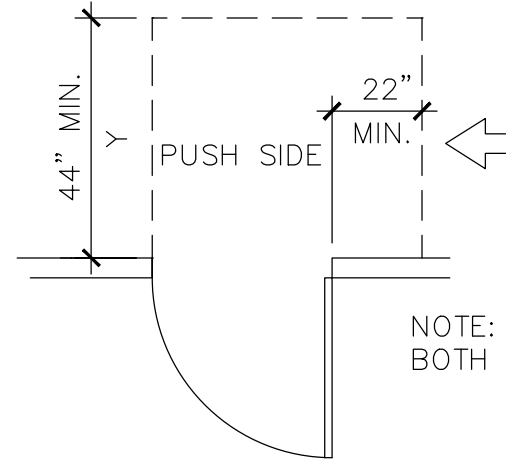


TYPICAL BLOCKING

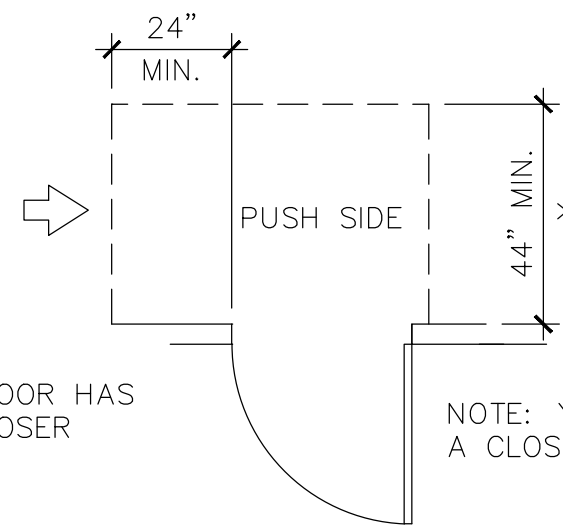
NOTE: BLOCKING DETAIL TO BE USED IN ALL CONDIONS FOR TOILET PARTITIONS, URINAL SCREENS, CHANGING STATION, ETC., ANYWHERE SUPPORT IS REQUIRED FOR INSTALLATION PURPOSES



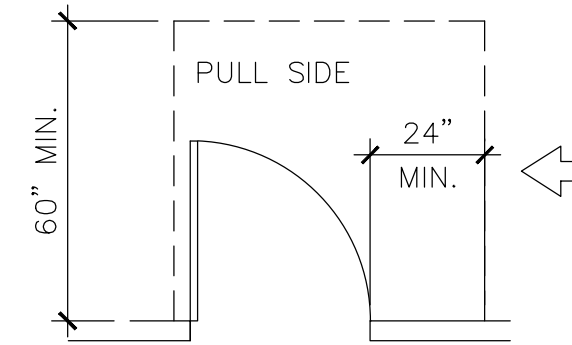
HINGE SIDE APPROACHES – SWINGING DOORS



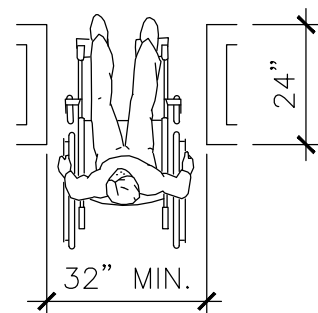
NOTE: Y=48" MIN. IF DOOR HAS BOTH A LATCH AND CLOSER



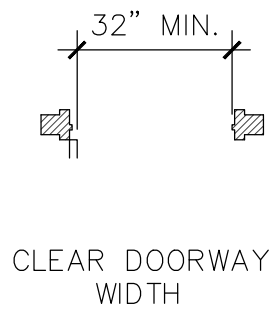
NOTE: Y=48" MIN. IF DOOR HAS A CLOSER



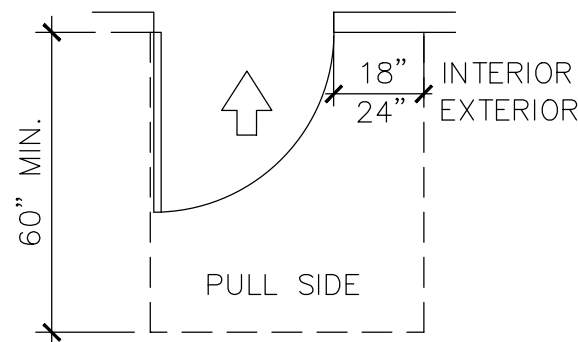
LATCH SIDE APPROACHES – SWINGING DOORS



MAXIMUM DOORWAY DEPTH

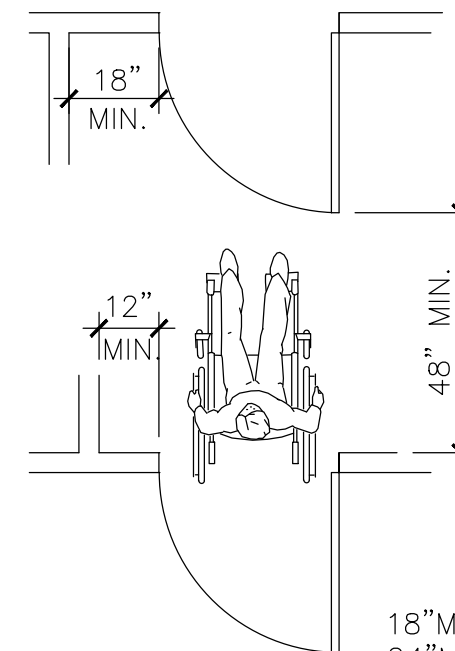
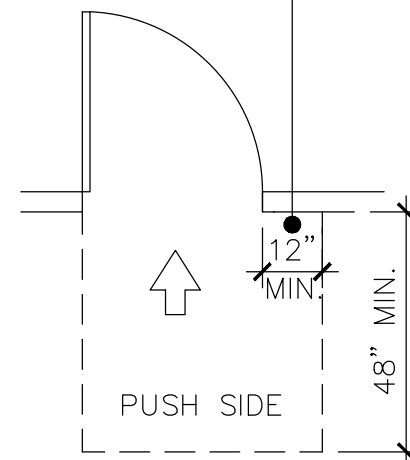


CLEAR DOORWAY WIDTH



FRONT APPROACHES – SWINGING DOORS

WHEN PROVIDE WITH BOTH CLOSURE & LATCH



18" MIN. AT INTR.
24" MIN. AT EXTR.

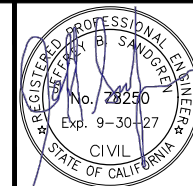
TWO HINGED DOORS IN SERIES

DOOR HARDWARE:

- HANDLES, PULLS, LATCHES, LOCKS AND OTHER OPERATING DEVICES ON ACCESSIBLE DOORS SHALL HAVE A SHAPE THAT IS EASY TO GRASP WITH ONE HAND AND DOES NOT REQUIRE TIGHT GRASPING, PINCHING OR TWISTING OF THE WRIST TO OPERATE. HARDWARE FOR ACCESSIBLE DOOR PASSAGE SHALL BE CENTERED BETWEEN 34 AND 48 INCHES ABOVE FINISH FLOOR
- IF A DOOR HAS A CLOSER, THEN THE SWEEP PERIOD OF THE CLOSER SHALL BE ADJUSTED SO THAT FROM AN OPEN POSITION OF 90 DEGREES, THE TIME REQUIRED TO MOVE THE DOOR TO A POSITION OF 12 DEGREES FROM THE LATCH IS 5 SECONDS MINIMUM
- PUSH/PULL FORCE TO MANUALLY OPEN A DOOR SHALL NOT EXCEED 5 POUNDS (22.2 N)
- FORCE TO UNLATCH HARDWARE BY PUSH/PULL OPERATION SHALL NOT EXCEED 15 POUNDS (67 N)

DENNIS C. NELSON COMPANY
 BUILDING DESIGN, LAND USE PLANNING AND CONSTRUCTION MANAGEMENT
 120 N. AUBURN STREET, SUITE 200
 GRASS VALLEY, CA 95945
 Bus: (530) 674-7501 Fax: (530) 674-7503
 Email: dnelson@syix.com

CITY HALL PUBLIC RESTROOM RENOVATIONS
CITY OF MARYSVILLE
 526 C STREET, MARYSVILLE, CA 95901



J.B. SANDGREN ENGINEERING
 120 N. AUBURN STREET, SUITE 200
 GRASS VALLEY, CALIFORNIA 95945
 OFFICE (530) 788-8794 • FAX (530) 742-1331
 EMAIL: JEFF@JBSANDGREN.COM

Job No.: 24-3352R
 Date: 05/27/2026
 Scale: NO SCALE

Drawn By: D.NELSON
 Sheet No.: 7 OF 9

Revisions	
△	
△	

KOHLER

Highcliff™ Ultra
Top spud flushometer bowl
K-96057

Features

- Elongated bowl offers added room and comfort
- 1-1/2" (38 mm) top spud
- 2-1/8" (54 mm) fully glazed trapway
- 10" x 7" (254 mm x 178 mm) water surface
- 1.0 gpf (3.8 lpf), 1.1 gpf (4.2 lpf), 1.28 (4.8 lpf), or 1.6 gpf (6.0 lpf) depending on flushometer specified
- Also available with antimicrobial finish K-96057-SS
- 10" or 12" (254 or 305 mm) rough-in
- Supports static load of 2,500 lbs

Material

- Vitreous china

Technology

- Designed to outperform competitors in bowl cleanliness and plug resistance
- Maximum waste removal
- Engineered for toilet seat cover removal
- Excellent bowl rinse
- Engineered to flush effectively in buildings with low supply pressure and flow
- Maximum drain line carry at all flush volumes per ASME standard

Installation

- Replaces Highcrest K-4302, Highcliff K-4368 and Highline K-4405. Height and footprint may vary



ADA CSA B651 OBC

Codes/Standards
 ASME A112.19.2/CSA B45.1
 DOE - Energy Policy Act 1992
 EPA WaterSense®
 California Energy Commission (CEC)
 ADA
 ICC/ANSI A117.1
 CSA B651
 OBC
 IAPMO Certification

KOHLER® One-Year Limited Warranty

See website for detailed warranty information.

Available Colors/Finishes

Color tiles intended for reference only.

Color	Code	Description
White	0	White
Blacut	96	Blacut
Black Black™	7	Black Black™

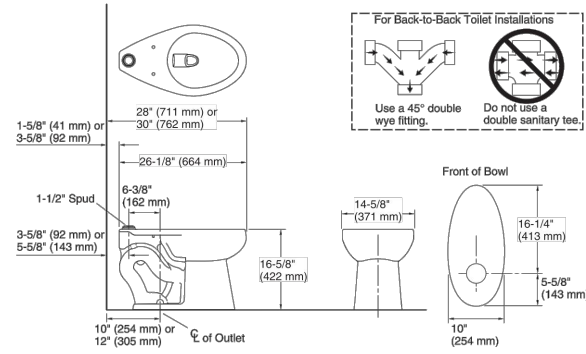
1-800-4KOHLER (1-800-456-4537)

Kohler Co. reserves the right to make revisions without notice to product specifications. For the most current Specification Sheet, go to www.kohler.com USA or www.kohler.ca Canada 6-8-2024 20:29 - US

THE BOLD LOOK OF **KOHLER**

KOHLER

Highcliff™ Ultra
Top spud flushometer bowl
K-96057



Technical Information

Fixture Supply Requirements
 Min static pressure: 35 psi (241.3 kPa)
 Max static pressure: 80 psi (551.6 kPa)
 Min flowing pressure: 25 psi (172.4 kPa)

1-800-4KOHLER (1-800-456-4537)

Kohler Co. reserves the right to make revisions without notice to product specifications. For the most current Specification Sheet, go to www.kohler.com USA or www.kohler.ca Canada 6-8-2024 20:29 - US

THE BOLD LOOK OF **KOHLER**

SLOAN

SENSOR FLUSHOMETER
EBV500A

CODE NUMBER

3325500

DESCRIPTION

Polished Chrome Finish, Fixture Connection Top Spud, Single Flush, Battery, Infrared, Exposed Sensor Urinal/Water Closet Retrofit Flushometer.

DETAILS

- Finish: Polished Chrome (CP)
- Power Type: Battery
- Valve: Diaphragm/Piston
- Fixture Type: Urinal/Water Closet
- Fixture Connection: Top Spud

FEATURES

- ADA Compliant Battery powered infrared side mount sensor for automatic "No Hands" operation
- Four (4) size C batteries included
- Non-Hold-Open True Mechanical Override Full Flush Button
- "Low Battery" Flashing LED
- "User in View" Flashing LED
- 72-Hour Sentinel Flush
- Estimated battery life - 3 years at 4000 cycles per month
- Sensor with Automatic Range Adjustment



COMPLIANCES & CERTIFICATIONS

ADA Compliant, BREEAM Water Credit, cUPC Certified, Green Globes Water Credit!

ELECTRICAL SPECIFICATIONS

- Arming Delay: 1-3 seconds
- Control Circuit: 6 VDC Input/72 Hour Sentinel Flush/Solid State
- Sensor Range: 22"-42" (559-1,067mm)

VALVE OPERATING PRESSURE (FLOWING)

15-80 PSI (103-552 kPa). Specific fixtures may require greater minimum flowing pressure - consult manufacturer requirements.

DOWNLOADS

- EBV500/550-A Installation Instructions
- EBV500/EBV550 Repair and Maintenance Guide
- Additional Downloads

NOTES

All information contained within this document subject to change without notice. Looking for other variations of the EBV500A product? View the general spec sheet with all options.

Find a compatible urinal for this flushometer. Find a compatible water closet for this flushometer.

WARRANTY

View Warranty Information

Sloan 10500 Seymour Ave, Franklin Park, IL 60131

Phone: 800.982.5839 • Fax: 800.447.8329 • sloan.com

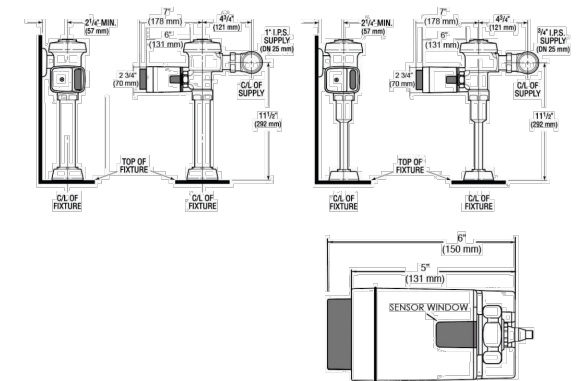
Code 3325500 • Downloaded 08/01/25 • Revised 05/13/25 • View Latest Version

Page 1 of 2

SLOAN

SENSOR FLUSHOMETER
EBV500A

ROUGH-IN



Sloan 10500 Seymour Ave, Franklin Park, IL 60131

Phone: 800.982.5839 • Fax: 800.447.8329 • sloan.com

Code 3325500 • Downloaded 08/01/25 • Revised 05/13/25 • View Latest Version

Page 2 of 2

SLOAN

REGAL® MANUAL FLUXÓMETRO
REGAL 111-1.28-XL

NÚMERO DE CÓDIGO

3080050

DESCRIPCIÓN

1.28 gpf, Cromo Pulido Terminar, Sencillo Vaclar, Regal® Expuesta Manual Sanitario Fluxómetro.

DETALLES

- Volumen de Descarga: 1.28 gpf (4.8 Lpf)
- Acabado: Cromo Pulido (CP)
- Válvula: Diafragma
- Material del Cuerpo de la Válvula: Latón Semi-rojo
- Tipo de Mueble de Baño: Sanitario
- Conexión del Accesorio: Spud Superior
- Dimensiones de pared a centro: 11 1/2" (292mm)
- Escarada de Empujamiento: 1 1/2" (38mm)
- Pipa de Suministro: 1" (25mm)
- Adaptador: Juego de Adaptador de Soldadura Blanda XL (XL)

CARACTERÍSTICAS

- Manija abierta no sostenida y Ajuste de volumen no externo para asegurar la conservación del agua
- Manija abierta no sostenida y Ajuste de volumen no externo para asegurar la conservación del agua
- Manija abierta no sostenida y Ajuste de volumen no externo para asegurar la conservación del agua



CUMPLIMIENTOS Y CERTIFICACIONES



(BABA Compliant, BREEAM Materials Credit, BREEAM Water Credit, Certificado cUPC Ecológico, Certificado por cUPC, Cumple con BAA, Cumple con la Ley ADA, EPD, Green Globes Materials & Resources Credit, Green Globes Water Credit, LEED Materials & Resources Credit, LEED V4 Water Efficiency Credit, Listado por WaterSense, Made in the USA, Satisfice los Créditos de LEED, WELL Building Standard)

ESPECIFICACIÓN RECOMENDADA

Cuerpo de Válvula, Cubierta, Boquilla y Válvula de Retención cumplirán con la Clasificación de Aliaciones de ASTM para Latón Semi-Rojo. La válvula cumplirá con las secciones aplicables de ASSE 1037 y ANSI/ASME 112.19.2.

PRESIÓN OPERATIVA DE VÁLVULA (FLUIDA)
15-80 PSI (103-552 kPa). Muebles de baño específicos pueden requerir mayor presión fluida mínima - consulte los requerimientos del fabricante.

DESCARGAS

- Regal XL Exposed Installation Instructions
- Control Stop Repair and Maintenance Guide
- Flush Connections Flanges Repair and Maintenance Guide
- Tail Piece Repair and Maintenance Guide
- Regal Flushometers Repair and Maintenance Guide
- Flushometer Pressure gauges
- Descargas Adicionales

NOTAS

Toda la información contenida dentro de este documento está sujeta a cambio sin previo aviso. Buscar otras variaciones del REGAL 111 producto? Ver la hoja

Sloan 10500 Seymour Ave, Franklin Park, IL 60131
Teléfono: 800.982.5839 • Fax: 800.447.8329 • sloan.com

Código 3080050 • Descargado 08/01/25 • Revisado 04/28/25 • Ver Versión Más Reciente

Page 1 de 2

SLOAN

REGAL® MANUAL FLUXÓMETRO
REGAL 111-1.28-XL

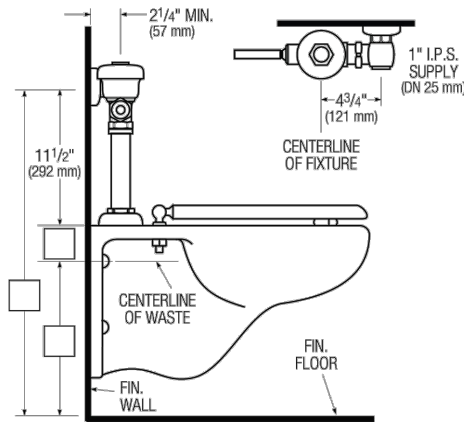
de especificaciones generales con todas las opciones.

WaterSense compliant when used with a WaterSense compliant fixture

GARANTÍA

View Warranty Information

PREPARACIÓN



Sloan 10500 Seymour Ave, Franklin Park, IL 60131
Teléfono: 800.982.5839 • Fax: 800.447.8329 • sloan.com

Código 3080050 • Descargado 08/01/25 • Revisado 04/28/25 • Ver Versión Más Reciente

Page 2 de 2

BEMIS
COMMERCIAL

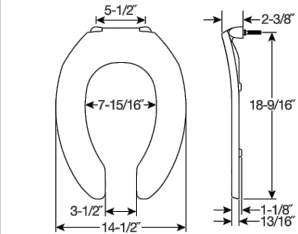
1955CT / 1955SSCT

COMMERCIAL HEAVY-DUTY
PLASTIC TOILET SEAT



FEATURES:

- STA-TITE® Commercial Fastening System™ Eliminates callbacks for loosened seats



SPECIFICATIONS:

Size: Elongated
 Material: Plastic
 Style: Open Front less Cover
 Ring Bumpers: Four
 Hinges: Plastic Non Self-Sustaining Check Hinges (1955CT) or Self-Sustaining Check Hinges (1955SSCT) with Non-Corrosion 300 Series Stainless Steel Posts and Pinlets
 Hardware: STA-TITE® Commercial Fastening System™

Codes & Standards:



Proudly Made in the USA

Eco-Friendly

Bemis Manufacturing Co., Sheboygan Falls, WI 53085 | ToiletSeats.com | ph: 800.556.7651 | fx: 800.292.3647
Bemis Manufacturing Co. reserves the right to make revisions without notice to product specifications.

DENNIS C. NELSON COMPANY
 BUILDING DESIGN, LAND USE PLANNING
 AND CONSTRUCTION MANAGEMENT
 120 N. AUBURN STREET, SUITE 200
 GRASS VALLEY, CA 95945
 Bus: (530) 674-7501 Fax: (530) 674-7503
 Email: dnelson@syix.com

CITY HALL PUBLIC RESTROOM RENOVATIONS
CITY OF MARYSVILLE
 526 C STREET, MARYSVILLE, CA 95901



J.B. SANDGREN ENGINEERING
 120 N. AUBURN STREET, SUITE 200
 GRASS VALLEY, CALIFORNIA 95945
 OFFICE (530) 788-8794 • FAX (530) 742-1331
 EMAIL: JEFF@JBSANDGREN.COM

Job No.: 24-3352R
 Date: 05/27/2026
 Scale: NO SCALE

Drawn By: D.NELSON
 Sheet No.: 8 OF 9

Revisions	
△	
△	

CODE NUMBER
3325500

DESCRIPTION

Polished Chrome Finish, Fixture Connection Top Spud, Single Flush, Battery, Infrared, Exposed Sensor Urinal/Water Closet Retrofit Flushometer.

DETAILS

- Finish: Polished Chrome (CP)
- Power Type: Battery
- Valve: Diaphragm/Piston
- Fixture Type: Urinal/Water Closet
- Fixture Connection: Top Spud

FEATURES

- ADA Compliant: Battery powered infrared side mount sensor for automatic "No Hands" operation
- Four (4) size C batteries included
- Non-Hold-Open True Mechanical Override Full Flush Button
- "Low Battery" Flashing LED
- "User in View" Flashing LED
- 72-Hour Sentinel Flush
- Estimated battery life - 3 years at 4000 cycles per month
- Sensor with Automatic Range Adjustment



COMPLIANCES & CERTIFICATIONS



(ADA Compliant, BREEAM Water Credit, cUPC Certified, Green Globes Water Credit)

ELECTRICAL SPECIFICATIONS

- Arming Delay: 1-3 seconds
- Control Circuit: 6 VDC Input/72 Hour Sentinel Flush/Solid State
- Sensor Range: 22" - 42" (559 - 1,067mm)

VALVE OPERATING PRESSURE (FLOWING)

15-80 PSI (1.03-5.52 kPa). Specific fixtures may require greater minimum flowing pressure - consult manufacturer requirements.

DOWNLOADS

- EBV-500/550-A Installation Instructions
- EBV500/EBV550 Repair and Maintenance Guide
- Additional Downloads

NOTES

All information contained within this document subject to change without notice.

Looking for other variations of the EBV500A product? View the general spec sheet with all options.

Find a compatible urinal for this flushometer.
Find a compatible water closet for this flushometer.

WARRANTY

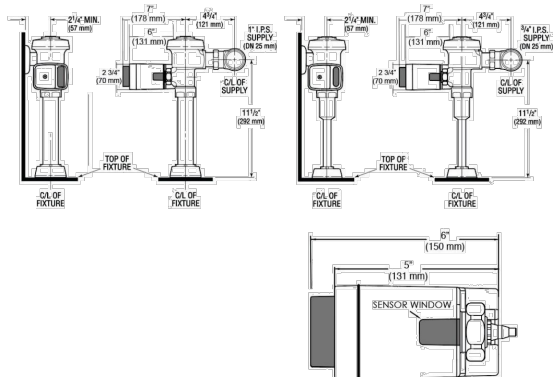
View Warranty Information

Sloan 10500 Seymour Ave, Franklin Park, IL 60131
Phone: 800.982.5839 • Fax: 800.447.8329 • sloan.com

Code 3325500 • Downloaded 08/01/25 • Revised 05/13/25 • View Latest Version

Page 1 of 2

ROUGH-IN



Sloan 10500 Seymour Ave, Franklin Park, IL 60131
Phone: 800.982.5839 • Fax: 800.447.8329 • sloan.com

Code 3325500 • Downloaded 08/01/25 • Revised 05/13/25 • View Latest Version

Page 2 of 2

Features

- Washout urinal
- 3/4" (19 mm) top spud
- 0.125 - 1.0 gpf (0.47 - 3.8 lpf)
- Will replace K-4904-ET

Material

- Vitreous china

Installation

- 14" (356 mm) extended rim



ADA CSA B651

Codes/Standards

- ASME A112.19.2/CSA B45.1
- DOE - Energy Policy Act 1992
- EPA WaterSense®
- California Energy Commission (CEC)
- ADA
- ICC/ANSI A117.1
- CSA B651
- IAPMO Certification

KOHLER® One-Year Limited

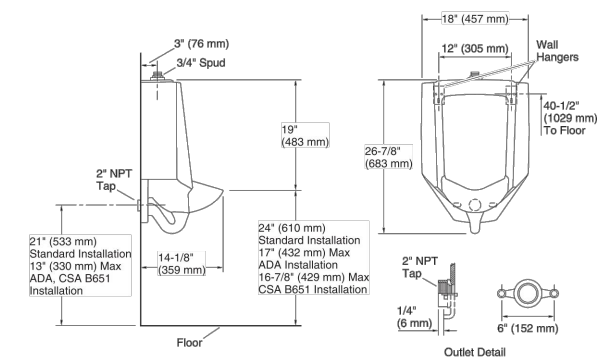
Warranty

See website for detailed warranty information.

Available Colors/Finishes

Color tiles intended for reference only.

Color	Code	Description
White	0	White
Biscuit	96	Biscuit
Black Black™	7	Black Black™



Technical Information

All product dimensions are nominal.
Spud size: 3/4", Inlet, Top
Min. Water per Flush: 0.125 gpf (0.5 lpf)
Max. Water per Flush: 1 gpf (3.8 lpf)
Designed for the above water use when installed with a water-saving flushometer.

Notes

Install this product according to the installation guide.
Refer to manufacturer's instructions and local codes for flushometer requirements.
Recommended ADA outlet spud height will account for normal product variation.
For ADA compliance, measurement must be 17" (432 mm) or less from the floor to the top of the lip. For CSA B651 compliance, measurement must be 16-7/8" (429 mm) or less from the floor to the top of the lip.
ADA, CSA B651 compliant when installed to the specific requirements of these regulations.

1-800-4KOHLER (1-800-456-4537)
Kohler Co. reserves the right to make revisions without notice to product specifications.

Code 3325500 • Downloaded 08/01/25 • Revised 05/13/25 • View Latest Version

THE BOLD LOOK OF KOHLER

CODE NUMBER

3982604

DESCRIPTION

0.125 gpf, XL Sweat Solder Adapter Kit, Polished Chrome Finish, Fixture Connection Top Spud, Single Flush, Regal® Exposed Manual Urinal Flushometer.

DETAILS

- Flush Volume: 0.125 gpf (0.5 Lpf)
- Finish: Polished Chrome (CP)
- Valve: Diaphragm
- Valve Body Material: Semi-red Brass
- Fixture Type: Urinal
- Fixture Connection: Top Spud
- Rough-In Dimension: 11 1/2" (292mm)
- Spud Coupling: 1/2" (13mm)
- Supply Pipe: 1/2" (13mm)
- Adapter: XL Sweat Solder Adapter Kit (XL)

FEATURES

- ADA Compliant Metal Oscillating Non-Hold-Open Handle
- Control Stop Plug
- Sweat Solder Adapter with Cover Tube
- Cast Wall Flange with Set Screw
- Vacuum Breaker Flush Connection
- Spud Coupling Wall and Spud Flange for 3/4" Top Spud
- Non-Hold-Open Handle and No External Volume Adjustment to Ensure Water Conservation
- 3/4" I.P.S. Wheel Handle Bak-Chek® Angle Stop



COMPLIANCES & CERTIFICATIONS



(ADA Compliant, BAA Compliant, BABAA Compliant, BREEAM Materials Credit, BREEAM Water Credit, cUPC Certified, cUPC Green Certified, EPD, Green Globes Materials & Resources Credit, Green Globes Water Credit, LEED Materials & Resources EPD Credit, LEED V4 Water Efficiency Credit, Made in the USA, Satisfies LEED Credits, UPC Certified, WaterSense Listed, WELL Building Standard)

RECOMMENDED SPECIFICATION

Valve Body, Cover, Tailpiece and Control Stop shall be in conformance with ASTM Alloy Classification for Semi-Red Brass. Valve shall be in compliance with the applicable sections of ASSE 1037 and ANSI/ASME 112.19.2.

VALVE OPERATING PRESSURE (FLOWING)

15-80 PSI (1.03-5.52 kPa). Specific fixtures may require greater minimum flowing pressure - consult manufacturer requirements.

DOWNLOADS

- Regal XL Exposed Installation Instructions
- Control Stop Repair and Maintenance Guide
- Flush Connections Flanges Repair and Maintenance Guide
- Tail Piece Repair and Maintenance Guide
- Regal Flushometers Repair and Maintenance Guide
- Flushometer Pressure gauges
- Additional Downloads

NOTES

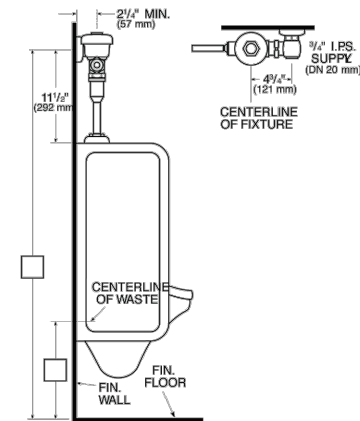
All information contained within this document subject to change without notice.

Sloan 10500 Seymour Ave, Franklin Park, IL 60131
Phone: 800.982.5839 • Fax: 800.447.8329 • sloan.com

Code 3982604 • Downloaded 08/01/25 • Revised 04/28/25 • View Latest Version

Page 1 of 2

ROUGH-IN



change without notice.

Looking for other variations of the REGAL 186 product? View the general spec sheet with all options.

WaterSense compliant when used with a WaterSense compliant fixture

WARRANTY

View Warranty Information

Sloan 10500 Seymour Ave, Franklin Park, IL 60131
Phone: 800.982.5839 • Fax: 800.447.8329 • sloan.com

Code 3982604 • Downloaded 08/01/25 • Revised 04/28/25 • View Latest Version

Page 2 of 2

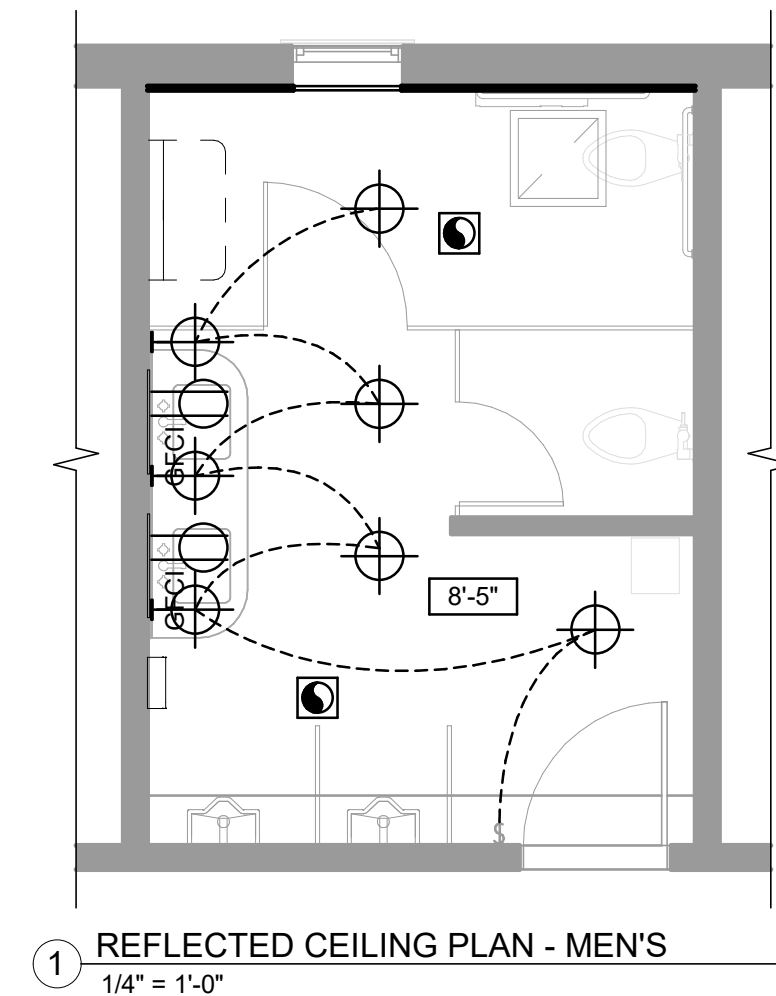
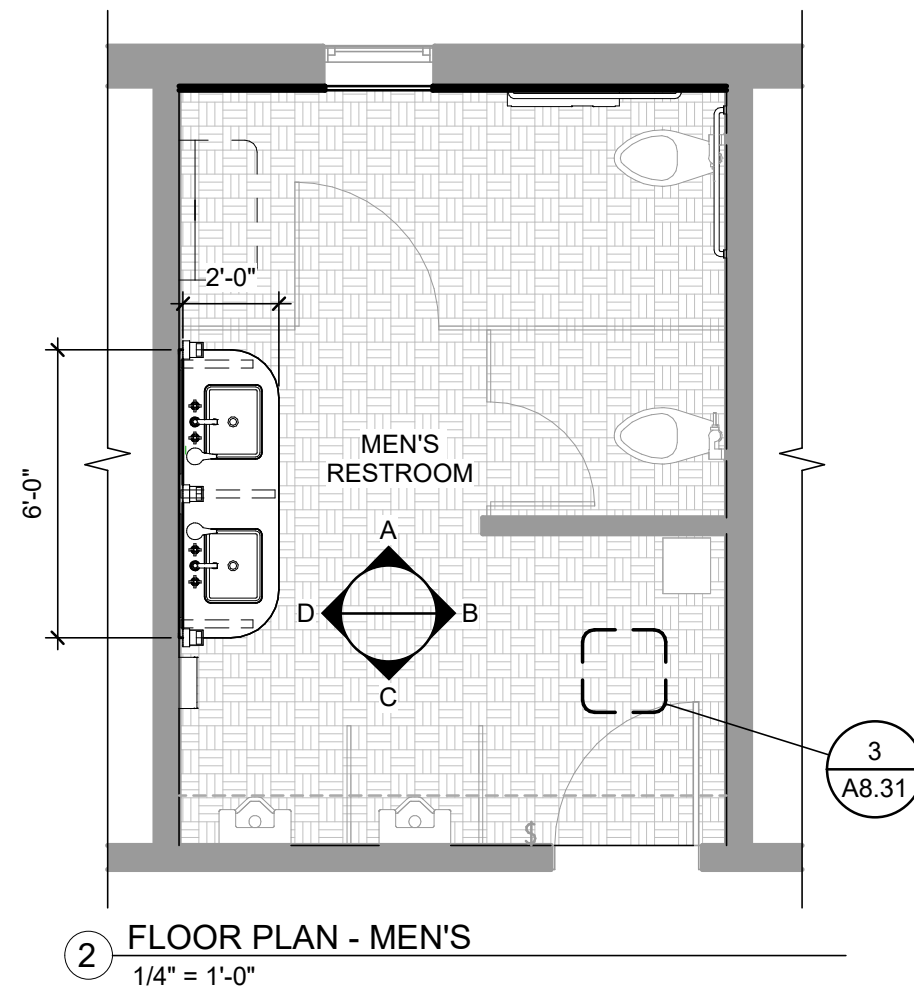
DN DENNIS C. NELSON COMPANY
BUILDING DESIGN, LAND USE PLANNING AND CONSTRUCTION MANAGEMENT
120 N. AUBURN STREET, SUITE 200
GRASS VALLEY, CA 95945
Bus: (530) 674-7501 Fax: (530) 674-7503
Email: dnelson@syix.com

CITY HALL PUBLIC RESTROOM RENOVATIONS
CITY OF MARYSVILLE
526 C STREET, MARYSVILLE, CA 95901



J.B. SANDGREN ENGINEERING
120 N. AUBURN STREET, SUITE 200
GRASS VALLEY, CALIFORNIA 95945
OFFICE (530) 788-8794 • FAX (530) 742-1331
EMAIL: JEFF@JBSANDGREN.COM

Job No.: 24-3352R	Drawn By: D.NELSON	Revisions	
Date: 05/27/2026	Sheet No.:	△	
Scale: NO SCALE	9 OF 9	△	



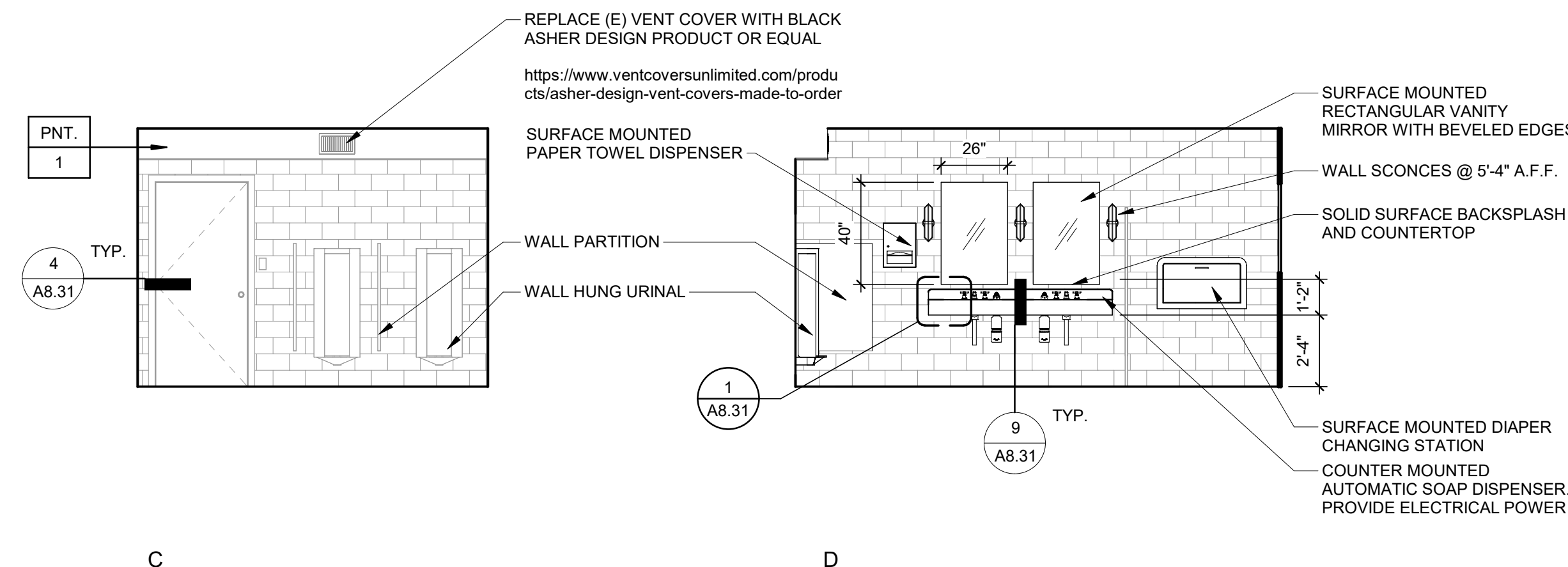
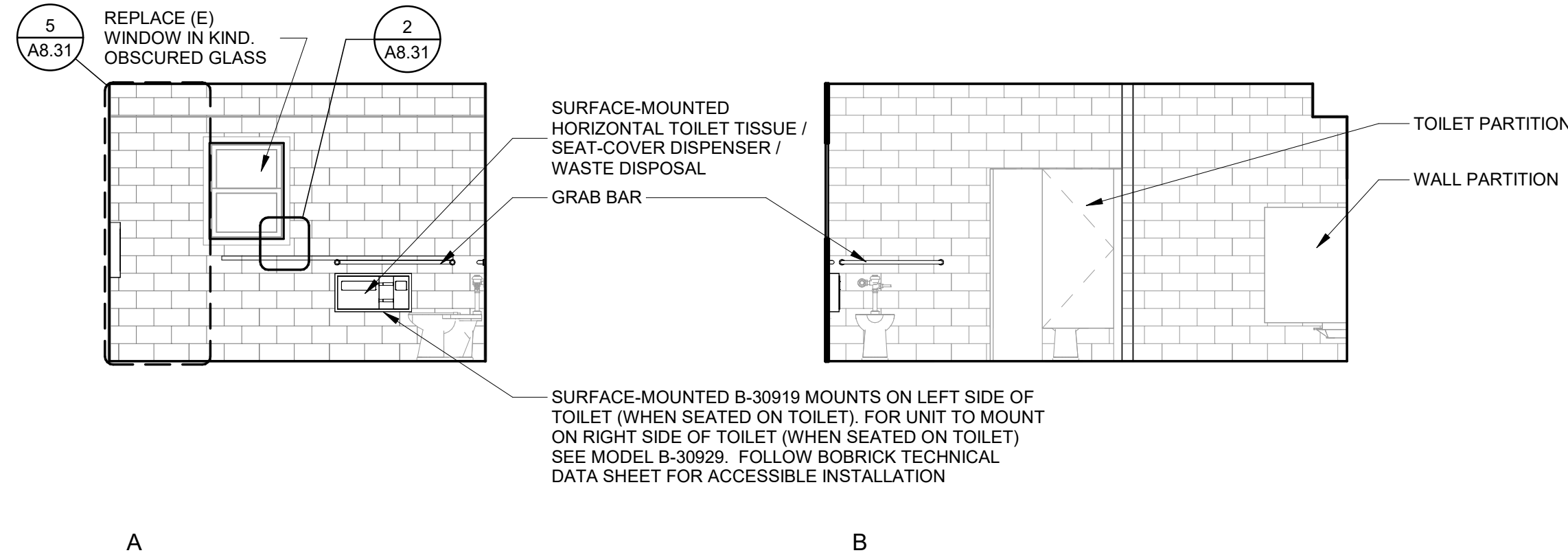
ELECTRICAL LEGEND

- ⌚ SINGLE POLE SWITCH WITH MOTION DETECTION, +48"
- ⊕ CEILING MOUNTED LIGHT FIXTURE
- ⊕ WALL MOUNTED LIGHT FIXTURE, +5'-4" U.N.O.
- ⊠ EXHAUST FAN
- ⊠ (E) RETURN REGISTER, V.I.F.
- ⊕ GFCI 110V DUPLEX W/ GROUND FAULT INTERRUPTER
- 8'-0" CEILING HEIGHT TAG



INT. ELEVATION NOTES

1. ALL GYP. BD. AND PLASTER SHALL BE INSTALLED PER CBC CHAPTER 25.
2. PROVIDE MOISTURE RESISTANT TYPE 'X' GYP. BD. AT ALL HIGH MOISTURE LOCATIONS.
3. CHANGE INTERIOR FLOOR MATERIALS AT THE CENTERLINE OF DOOR, U.N.O.
4. ALL GYP BOARD CEILING AND WALLS SHALL BE FINISHED PER GYP. BD. FINISH SCHEDULE & PAINTED PT-1 U.N.O.
5. REFERENCE REFLECTED CEILING PLANS FOR ADDITIONAL INFORMATION REGARDING CEILING TYPE, SOFFIT LOCATIONS AND MATERIAL.
6. WALL AND CEILING MATERIALS SHALL NOT EXCEED THE ALLOWABLE FLAME SPREAD CLASSIFICATIONS IN APPLICABLE CODE, CLASS A.
7. ALL INTERIOR FINISH AND MATERIALS SHALL MEET THE TESTING AND PERFORMANCE REQUIREMENTS OUTLINED IN CBC CHAPTER 8.
8. ALL TILE CORNERS TO BE MITERED FOR A CLEAN, CONTINUOUS EDGE U.N.O. PROVIDE UNIFORM MITER JOINTS AND COORDINATE WITH TILE LAYOUT.
9. FOR TYPICAL BACKING REQUIREMENTS, SEE DETAIL 12 / A8.31
10. WOOD DOORS AND DOOR CASINGS AND FINISH TO MATCH EXISTING ADJACENT CITY HALL DOORS.



MARYSVILLE CITY HALL - RESTROOMS

Owner
 526 C St, Marysville, CA 95901
 APN 000-0000-000-0000

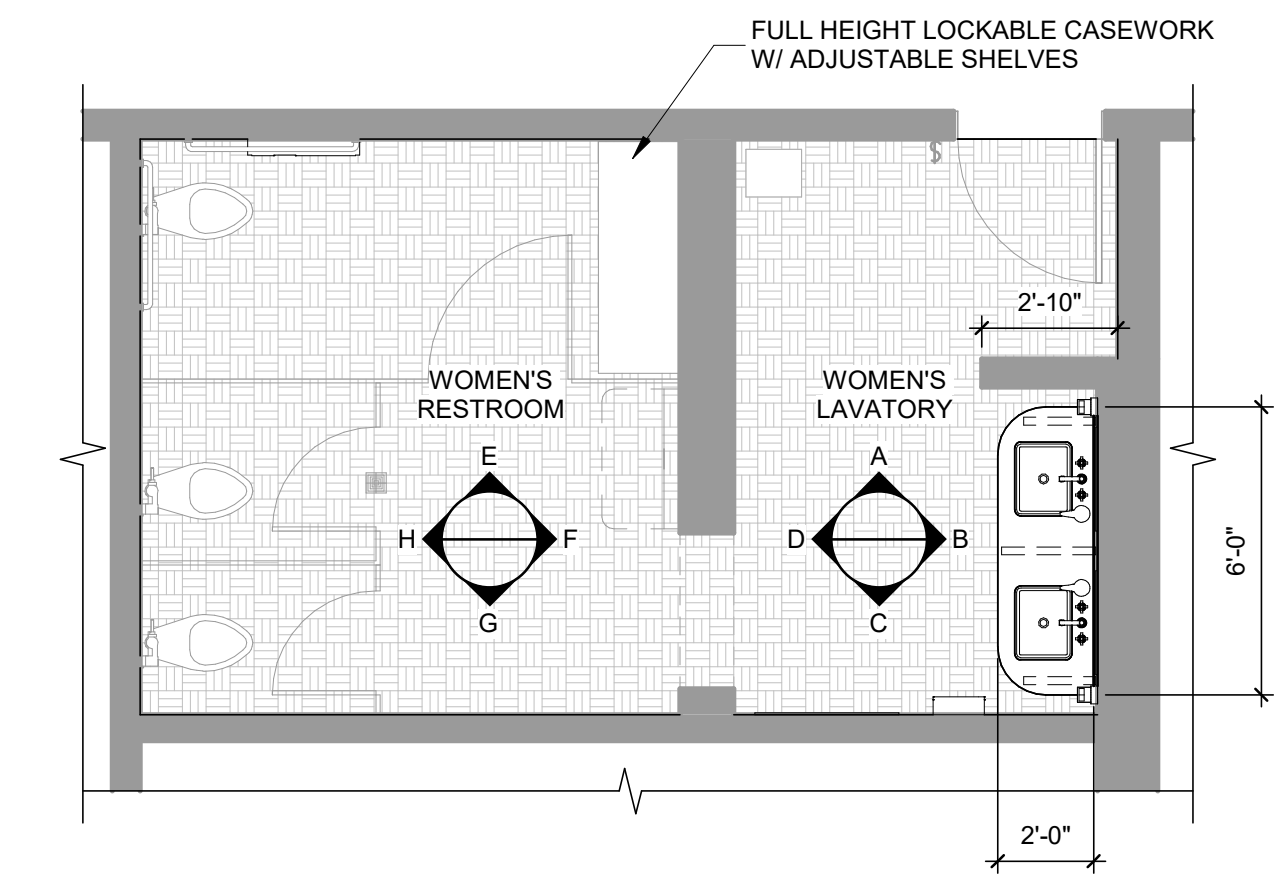
PROJECT STATUS

DATE:
 09.12.2025

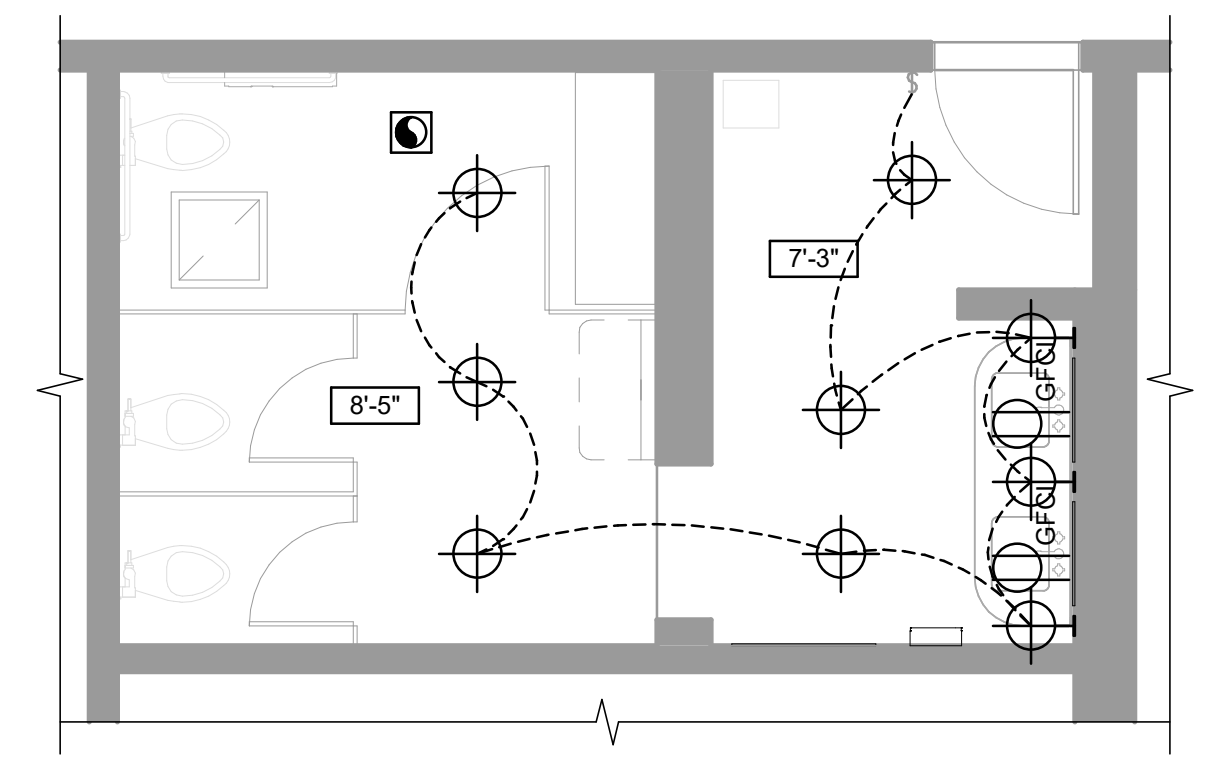
REVISIONS:

SHEET TITLE
MEN'S RESTROOM - PLANS & INT. ELEVATIONS

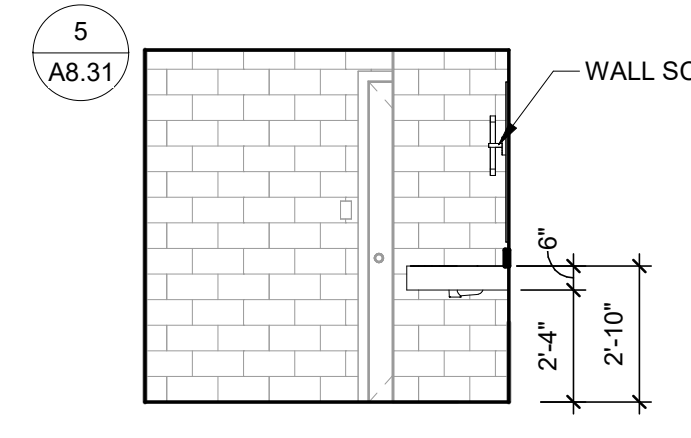
SHEET NO.
A4.51



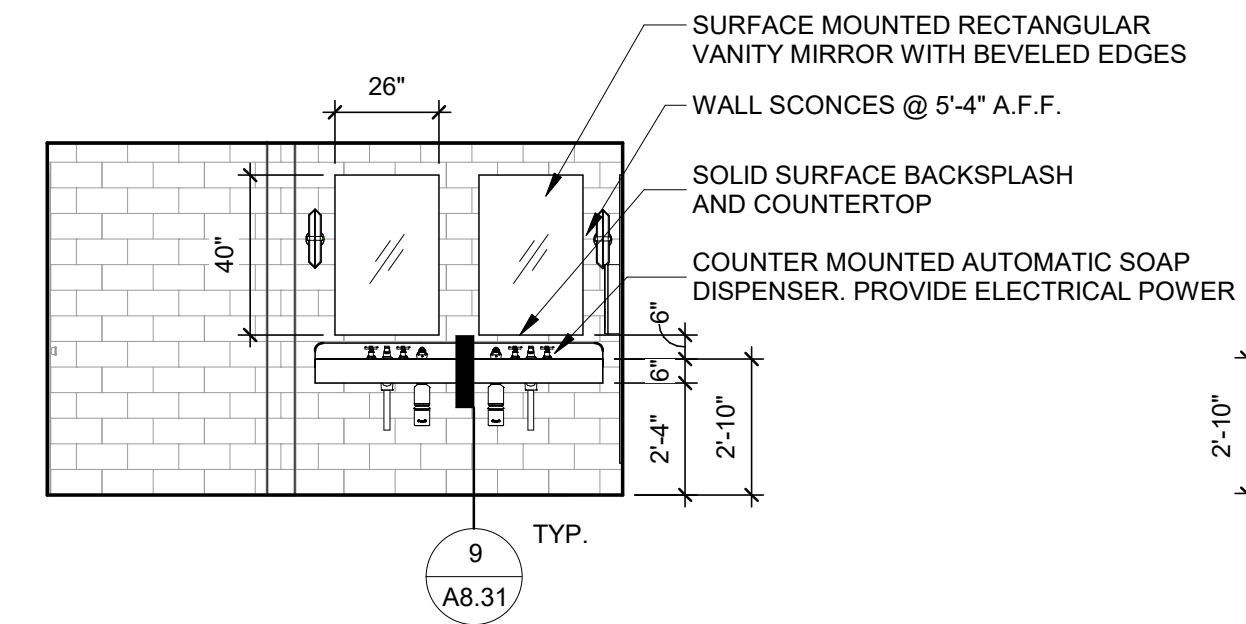
1 FLOOR PLAN - WOMEN'S
1/4" = 1'-0"



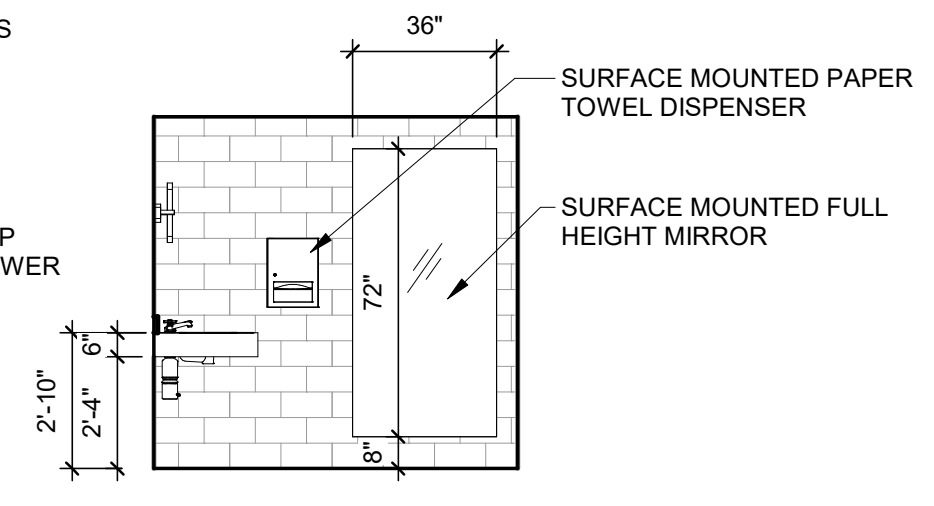
2 REFLECTED CEILING PLAN - WOMEN'S
1/4" = 1'-0"



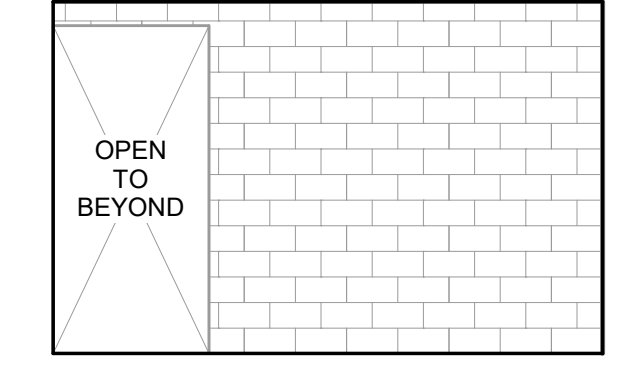
A



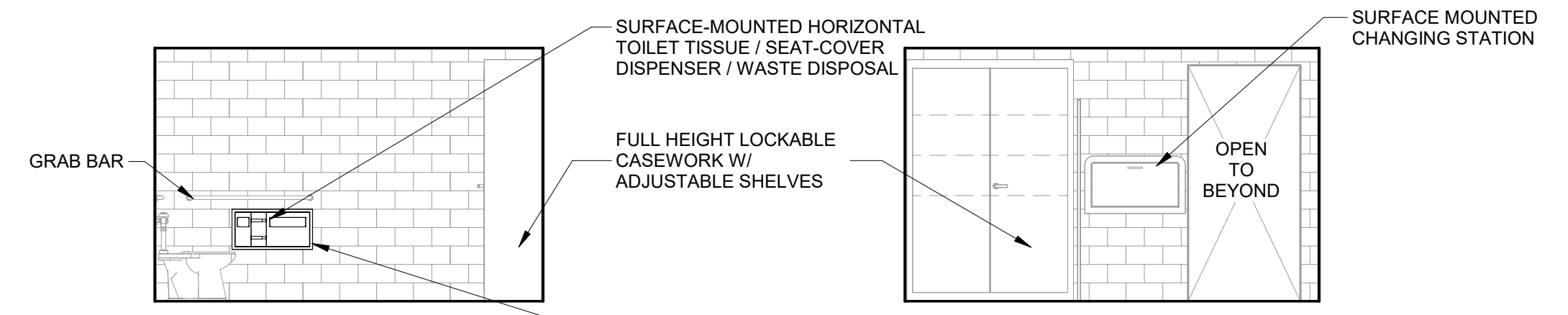
B



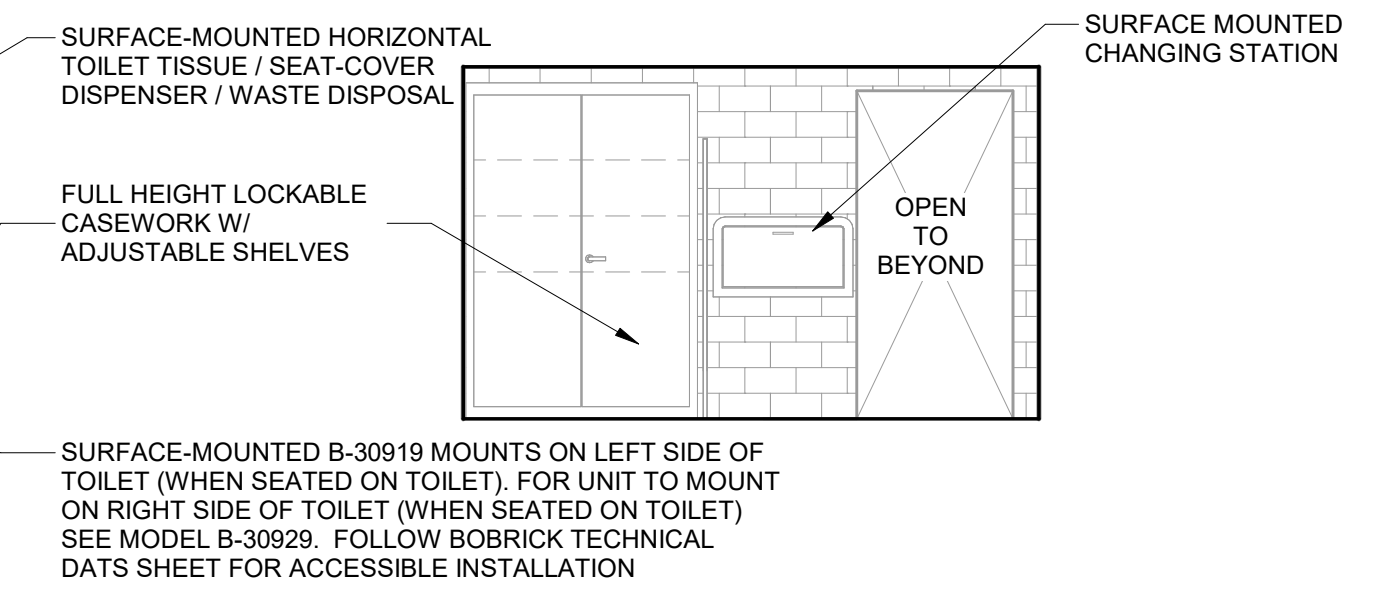
C



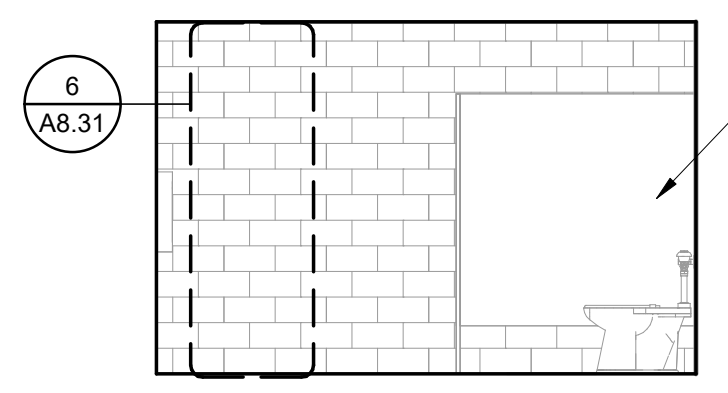
D



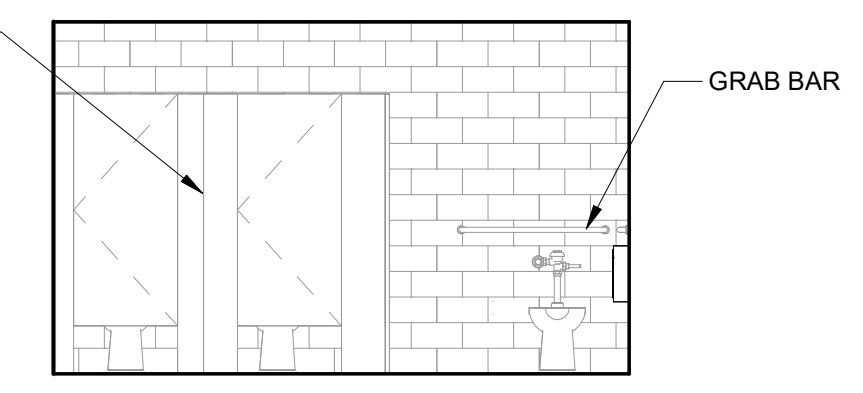
E



F



G



H

ELECTRICAL LEGEND

- \$ SINGLE POLE SWITCH WITH MOTION DETECTION, +48"
- ⊕ CEILING MOUNTED LIGHT FIXTURE
- ⊕ WALL MOUNTED LIGHT FIXTURE, +5'-4" U.N.O.
- ⊙ EXHAUST FAN
- ⊕ (E) RETURN REGISTER, V.I.F.
- ⊕ GFCI 110V DUPLEX W/ GROUND FAULT INTERRUPTER
- 8'-0" CEILING HEIGHT TAG

INT. ELEVATION NOTES

1. ALL GYP. BD. AND PLASTER SHALL BE INSTALLED PER CBC CHAPTER 25.
2. PROVIDE MOISTURE RESISTANT TYPE 'X' GYP. BD. AT ALL HIGH MOISTURE LOCATIONS.
3. CHANGE INTERIOR FLOOR MATERIALS AT THE CENTERLINE OF DOOR, U.N.O.
4. ALL GYP BOARD CEILING AND WALLS SHALL BE FINISHED PER GYP. BD. FINISH SCHEDULE & PAINTED PT-1 U.N.O.
5. REFERENCE REFLECTED CEILING PLANS FOR ADDITIONAL INFORMATION REGARDING CEILING TYPE, SOFFIT LOCATIONS AND MATERIAL.
6. WALL AND CEILING MATERIALS SHALL NOT EXCEED THE ALLOWABLE FLAME SPREAD CLASSIFICATIONS IN APPLICABLE CODE, CLASS A.
7. ALL INTERIOR FINISH AND MATERIALS SHALL MEET THE TESTING AND PERFORMANCE REQUIREMENTS OUTLINED IN CBC CHAPTER 8.
8. ALL TILE CORNERS TO BE MITERED FOR A CLEAN, CONTINUOUS EDGE U.N.O. PROVIDE UNIFORM MITER JOINTS AND COORDINATE WITH TILE LAYOUT.
9. FOR TYPICAL BACKING REQUIREMENTS, SEE DETAIL 12 / A8.31
10. WOOD DOORS AND DOOR CASINGS AND FINISH TO MATCH EXISTING ADJACENT CITY HALL DOORS.

ELLIS ARCHITECTS
4132 C Street
Sacramento, CA 95819
916.440.6765
ellis-architects.com

MARYSVILLE CITY HALL - RESTROOMS

Owner
526 C St, Marysville, CA 95901
APN 000-0000-000-0000

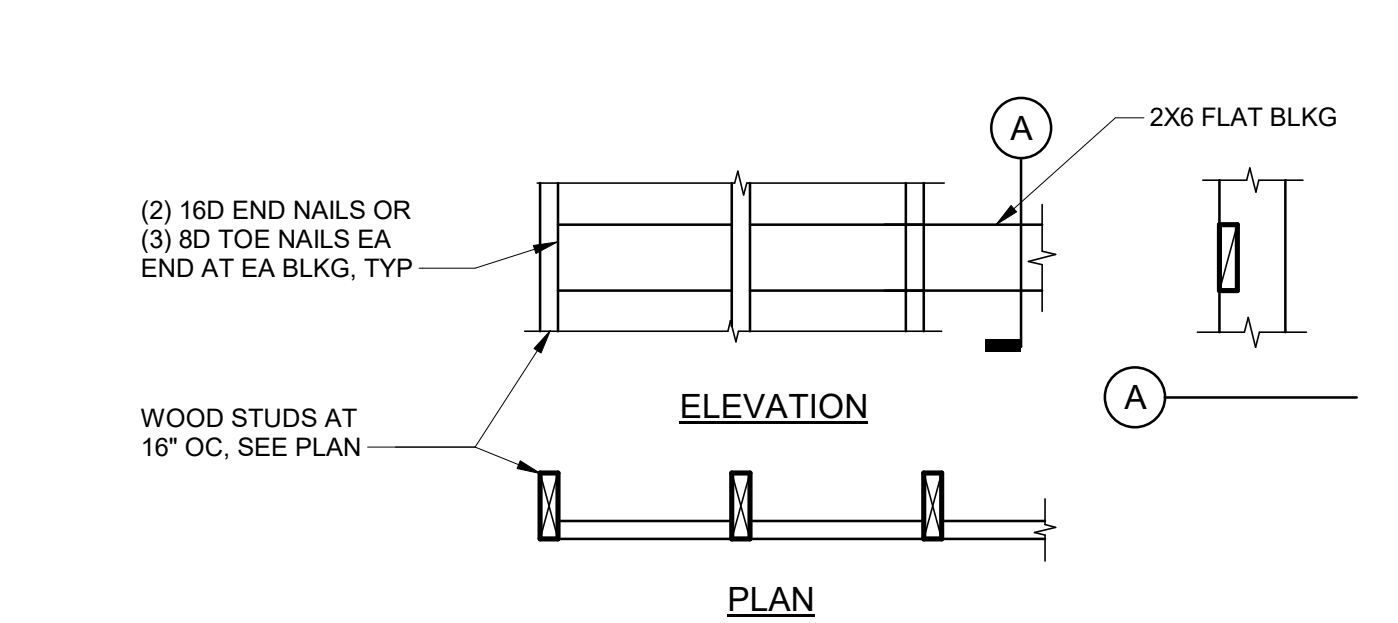
PROJECT STATUS

DATE:
09.12.2025

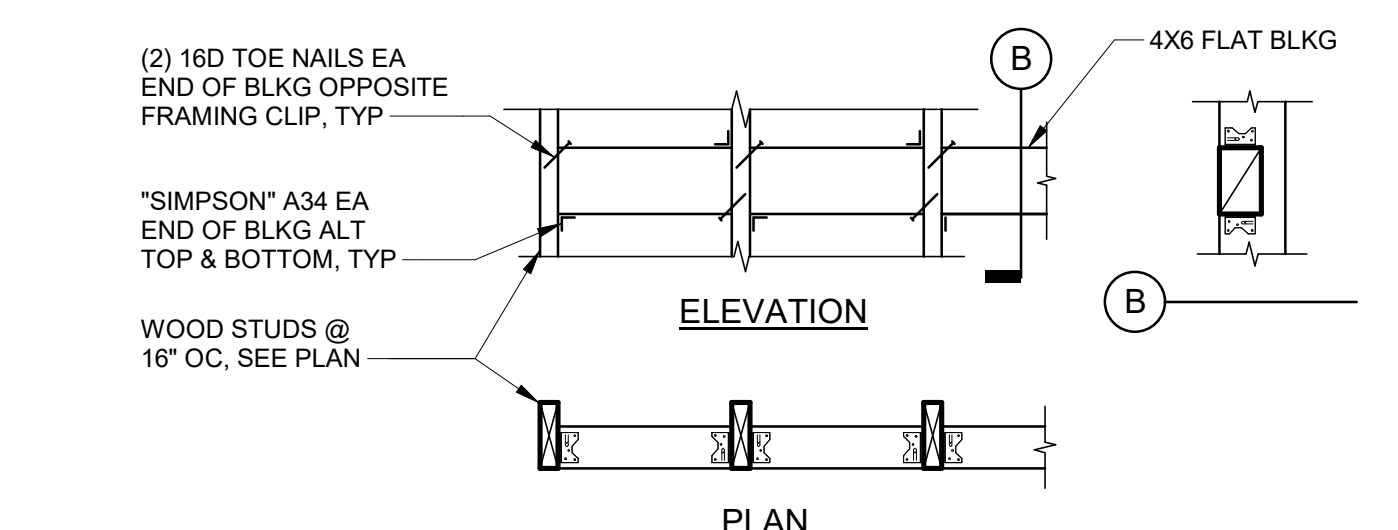
REVISIONS:

SHEET TITLE
WOMEN'S RESTROOM - PLANS & INT. ELEVATIONS

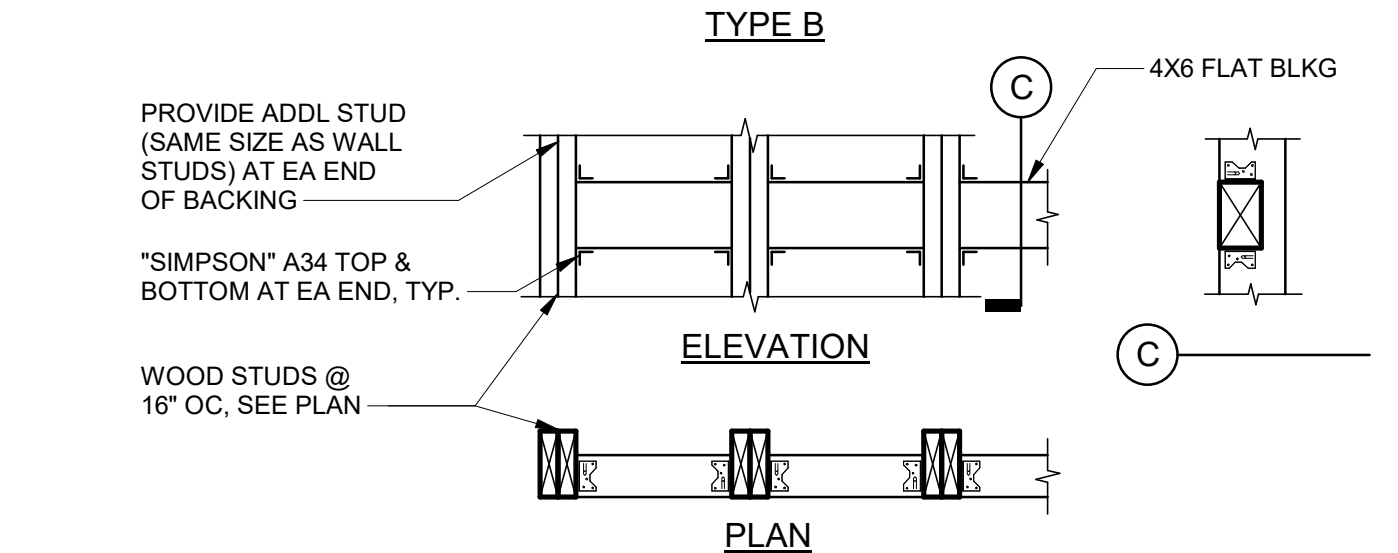
SHEET NO.
A4.52



ATTACH ACCESSORIES TO BACKING WITH #10 WOOD SCREWS, MIN
USE FOR: MIRRORS, FLAT SIGNS, TACK BOARDS, CHALKBOARDS, BULLETIN BOARDS, MARKER BOARDS, FRAMED ARTWORK



ATTACH ACCESSORIES TO BACKING WITH #12 WOOD SCREWS, MIN
USE FOR: TOILET & BATH ACCESSORIES UNO, DOOR STOPS, DOOR HOLDERS, CABINETS, DISPLAY CABINETS, TOILET PARTITIONS UNO



ATTACH ACCESSORIES TO BACKING WITH #14 OR 1/4" DIA WOOD SCREWS, MIN
USE FOR: HANDRAILS, GRAB BARS, SHOWER SEATS, SHELF BRACKETS, COUNTERTOP BRACKETS, URINAL SCREENS, WATER HEATER STRAPS, SINK BRACKETS

- NOTES:**
- DO NOT CUT OR NOTCH STUDS TO INSTALL BACKING
 - VERIFY LENGTH, HEIGHT, QUANTITY & LOCATION OF BACKING WITH ARCHITECTURAL DETAILS AND ACCESSORY MANUFACTURER
 - EXTEND BACKING TO FIRST STUD PAST END OF ACCESSORY

12 TYP. WOOD STUD WALL BACKING
3/4" = 1'-0"

