



City Hall Window Replacement-Retrofit & Flashing

526 C Street,
Marysville, CA 95901
Issue Date: May 18, 2026

Addendum #1 – City Hall Window Replacement Updated Plans

Project: City Hall Window Replacement-Retrofit & Flashing

To: Prospective Bidding General Contractors

This notice serves to inform all bidders that there are updated Window Plans for the City Hall Window Replacement project.

- **New Set Added: Window Retrofit Sealed Drawings 5-15-2026 Revised**

All other terms, conditions, and requirements of the bid documents remain unchanged unless modified by written addendum.

Bidders are responsible for acknowledging receipt of this notice in their bid proposal.

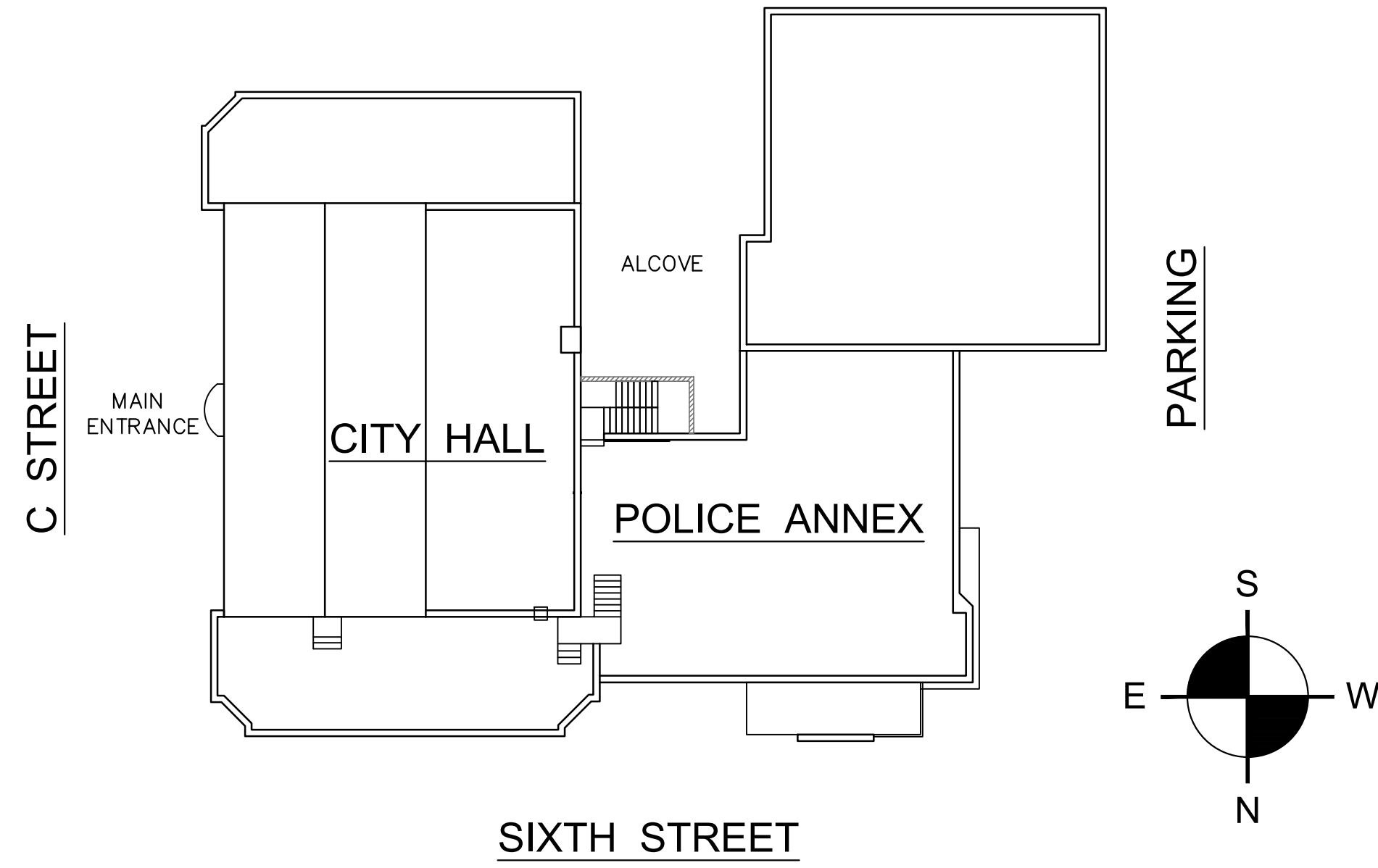
If you have any questions, please contact our office.

Jerry Handy

GENERAL NOTES

1. THE CITY HALL WINDOW REPLACEMENT-RETROFIT PROJECT CONSISTS OF THE REMOVAL OF THE WINDOW UNIT (FIXED OR OPERABLE PORTION) WHILE LEAVING IN PLACE THE EXTERNAL WINDOW FRAME. CARE SHALL BE TAKEN TO PROTECT THE WINDOW FRAME AND SURROUNDING EXTERIOR WALL AND SILL DURING THE REMOVAL AND NEW INSTALLATION PROCESS. INSIDE ELEMENTS SUCH AS SILL, CASINGS, TRIM, ETC. SHALL BE PROTECTED DURING THE REMOVAL AND NEW INSTALLATION PROCESS
2. WINDOW CONTRACTOR SHALL FIELD VERIFY ALL WINDOW OPENINGS AND ALL EXISTING FRAME DIMENSIONS REQUIRED FOR THE CONSTRUCTION OF THE NEW WINDOW UNIT PRIOR TO ORDERING NEW WINDOW UNIT
3. WINDOW CONTRACTOR SHALL FIELD VERIFY ALL VERTICAL AND HORIZONTAL MULLION PLACEMENT WITH CITY REPRESENTATIVE PRIOR TO ORDERING NEW WINDOW UNIT. THIS IS TO ASSURE REPLACEMENT WINDOWS MATCH THE CITY'S INTENT AND VISUAL APPEARANCE FOR THE HISTORIC CITY HALL BUILDING
4. ANY EXISTING DAMAGE TO THE EXTERIOR OR INTERIOR ELEMENTS OBSERVED PRIOR TO START OF THE RETROFIT SHALL IMMEDIATELY BE REPORTED THE CITY HALL REPRESENTATIVE
5. ANY DAMAGE TO THE EXTERIOR OR INTERIOR ELEMENTS CAUSED BY THE CONTRACTOR DURING THE RETROFIT PROJECT SHALL IMMEDIATELY BE REPORTED THE CITY HALL REPRESENTATIVE
6. ANY ISSUES ARISING FROM THE PROPOSED OVERALL RETROFIT OF ANY WINDOW UNIT SHALL BE IMMEDIATELY REPORTED THE CITY HALL REPRESENTATIVE
7. MILGARD TUSCANY SERIES V400 WINDOWS OR "CITY APPROVED EQUAL" MEETING THE MINIMUM SPECIFICATIONS MAY BE ACCEPTABLE AS THE RETROFIT WINDOW UNIT FOR THE PROJECT. SPECIFICATIONS FOR THE PROPOSED SUBSTITUTION SHALL BE SUBMITTED TO THE CITY HALL REPRESENTATIVE
 GLASS: 1/8" SunCoatMAX (LOW-E) OVER 1/8" CLEAR WITH BLACK EdgeGard SPACER
 U-FACTOR: 0.26 WINDOW CONTRACTOR SHALL FIELD VERIFY ALL VERTICAL AND HORIZONTAL MULLION PLACEMENT WITH
 SHGC: 0.18 EXISTING WINDOW TO BE REPLACED SO AS TO MATCH EXISTING PATTERN PRIOR TO ORDERING NEW WINDOW UNIT
 VT: 0.42
 FRAME FINISH: EXTERIOR-BLACK/INTERIOR-BLACK
 FIN TYPE: STANDARD Z-BAR
8. WINDOW CONTRACTOR SHALL COORDINATE REMOVAL AND INSTALLATION SCHEDULE WITH CITY HALL REPRESENTATIVE PRIOR TO START OF WORK. CITY HALL AND POLICE ANNEX OPERATIONS SHALL TAKE PRECEDENCE OVER ANY WORK SCHEDULE. THE WINDOW CONTRACTOR SHALL ADJUST THE INSTALLATION SCHEDULE TO ADHERE TO THE CITY HALL AND/OR POLICE DEPARTMENT REQUIREMENTS
9. WINDOW CONTRACTOR SHALL COORDINATE WITH THE CITY HALL REPRESENTATIVE AS TO CERTAIN WINDOW UNITS REQUIRING OPERABLE (CASEMENT) CAPABILITIES
10. ALL WINDOW UNITS BELOW THE FIRST FLOOR SHALL BE FIXED WITH OPAQUE SAFETY GLAZING
11. WINDOW CONTRACTOR SHALL FIELD VERIFY PRIOR TO INSTALLATION ANY WINDOW UNITS REQUIRING SAFETY GLASS TO BE INSTALLED IN PART OR ALL OF THE WINDOW UNIT AS REQUIRED BY CODE
12. WINDOW CONTRACTOR IS REQUIRED TO VERIFY THE TOTAL NUMBER OF ALL WINDOW UNITS BEING RETROFITTED AND THE ACTUAL INSTALLATION SIZE OF EACH UNIT BEING INSTALLED
13. SEE SPECIAL ROOF ACCESS WINDOW/DOOR REQUIREMENTS (SHEET 3) FOR DESIGN CRITERIA. WINDOW OR DOOR UNIT SHALL OPEN 90 DEGREES TO ALLOW ACCESS ON TO THE ROOF AREAS. GLAZING SHALL MEET THE MINIMUM EFFICIENCIES LISTED (SEE NOTE #7)

CITY PARKING LOT



CITY HALL LEGEND

SHEET INDEX	
A1.0	CITY HALL ELEVATIONS, LEGEND AND GENERAL NOTES
A2.0	MILGARD WINDOW DETAILS
A3.0	MIGARD WINDOW DETAILS
A4.0	WINDOW SCHEDULE, SILL CAP AND VERTICAL RAIL DETAIL
A5.0	WINDOW LOCATIONS AT BUILDING ELEVATION
A6.0	WINDOW LOCATIONS AT BUILDING ELEVATION

CITY HALL REPRESENTATIVE CONTACT INFO:
 JERRY HANDY
 4JCON, LLC
 530-682-6129
 jerry@4jcon.com



EAST ELEVATION
MAIN ENTRANCE



NORTH ELEVATION



SOUTH ELEVATION
LOWER LEVEL



SOUTH-EAST ELEVATION



WEST ALCOVE ELEVATION

CITY HALL - MAIN BUILDING

GENERAL OVERVIEW (WINDOWS SHOWN ARE EXISTING CONDITION)



NORTH ELEVATION-1



NORTH ELEVATION-2



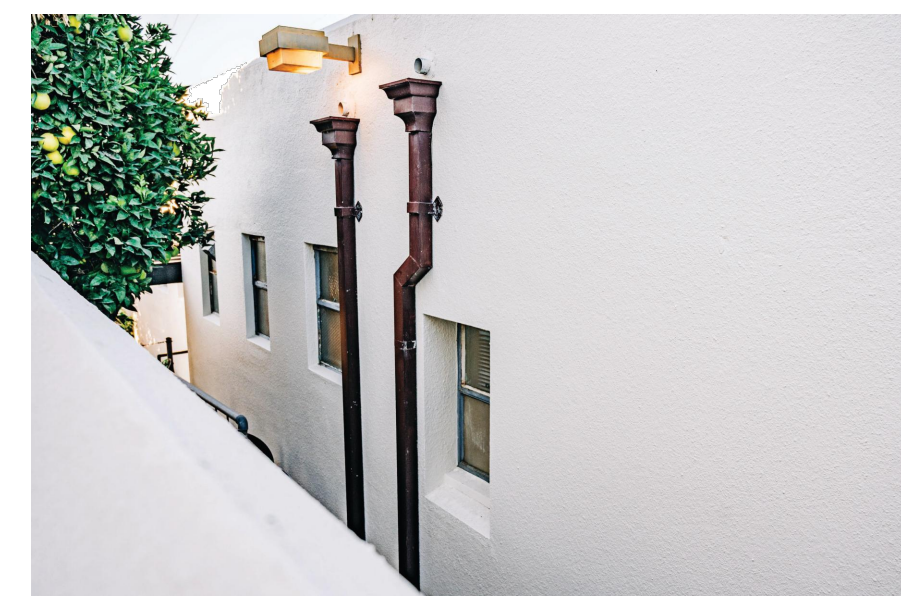
NORTH-WEST ELEVATION



WEST ELEVATION



EAST ALCOVE ELEVATION-1



EAST ALCOVE ELEVATION-2

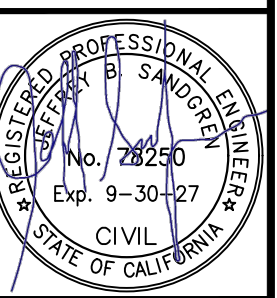
CITY HALL - POLICE ANNEX

GENERAL OVERVIEW (WINDOWS SHOWN ARE EXISTING CONDITION)

Revisions

△	

J.B. SANDGREN ENGINEERING
 120 N. AUBURN STREET, SUITE 200
 GRASS VALLEY, CALIFORNIA 95945
 OFFICE (530) 788-8794 • FAX (530) 742-1331
 EMAIL: JEFF@JBSANDGREN.COM



CITY HALL - EXTERIOR WINDOW RETROFIT
CITY OF MARYSVILLE
 526 C STREET MARYSVILLE, CA 95901

DENNIS C. NELSON COMPANY
 BUILDING DESIGN, LAND USE PLANNING
 1000 S. HUNTERS AVENUE, SUITE 200
 GRASS VALLEY, CA 95945
 BUS: (530) 674-7501 Fax: (530) 674-7503
 Email: dcnelson@dcnyk.com

Date 5/15/2026

Scale NONE

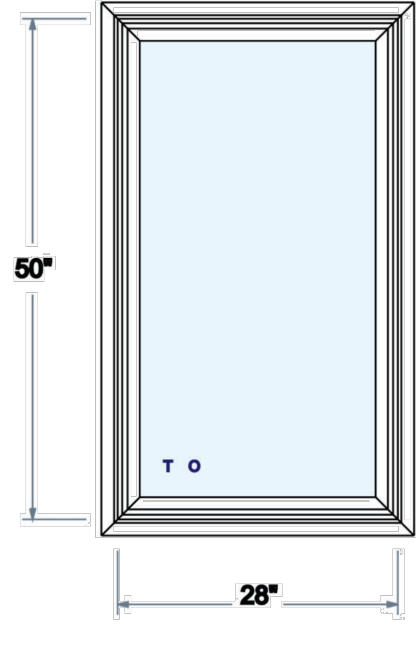
Drawn D. NELSON

Job 24-3352W

Sheet

A1.0

MILGARD
WINDOWS and DOORS

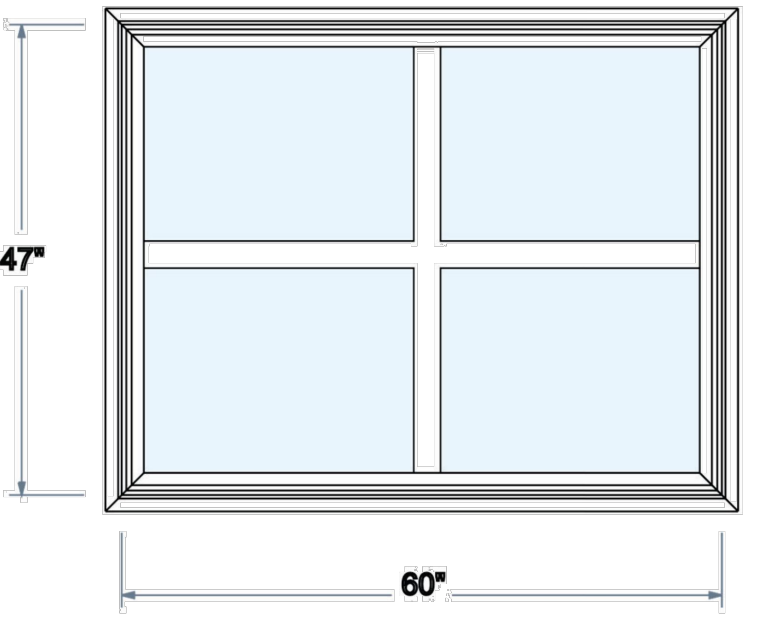


Viewed from Exterior (Net Frame)
L

Line No.	8
Location/Label	North Side PD L
Quantity	2
Product Line	V400 Turgony
Model	Custom/Opening Direct Glass
Size	Net Frame: 28" x 50"
Finish	Flat Black / Flat Black
Dimensions	Standard 2-Bar
Fit Type	Standard 2-Bar
Options	1.3K LowE/Argon/Max Low-E over 1.3K Clear Tempered with Gray Foam Spacer
U-Factor / SHGC / VT	.26 / .27 / .45
Clear Opening	Unit Area (Sq. Ft.): 1.0, Unit Perimeter (Linear) in (Inch): 34
Calculations	Unit Area (Sq. Ft.): 1.0, Unit Perimeter (Linear) in (Inch): 34
Range:	STD: 24, OPT: 24, PG: CW-P425

Quote Number: SQPFG003197_1
Last Modified Date: 4/28/2026 4:33 PM
Page: 9 of 17

MILGARD
WINDOWS and DOORS

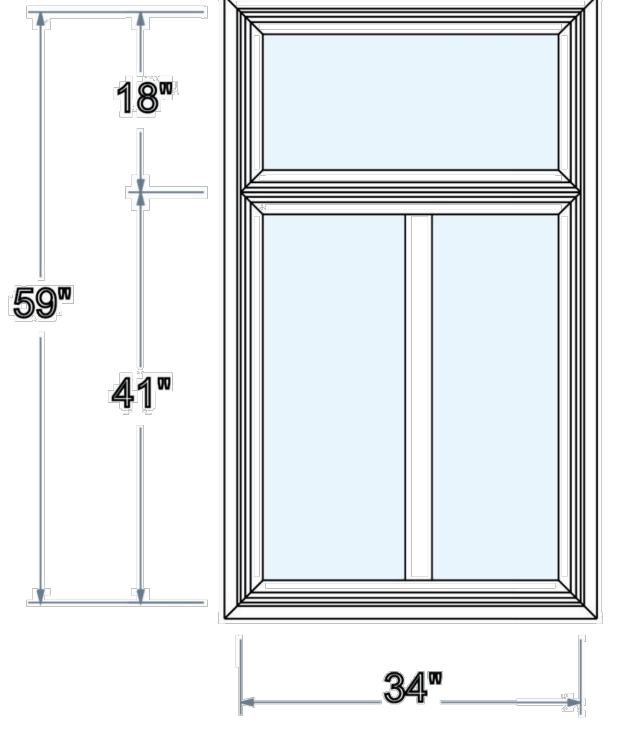


Viewed from Exterior (Net Frame)
O

Line No.	12
Location/Label	North Side PD O
Quantity	2
Product Line	V400 Turgony
Model	Custom/Opening Direct Glass
Size	Net Frame: 60" x 47"
Finish	Flat Black / Flat Black
Dimensions	Standard 2-Bar
Fit Type	Standard 2-Bar
Options	1.3K LowE/Argon/Max Low-E over 1.3K Clear with Gray Foam Spacer
U-Factor / SHGC / VT	.26 / .27 / .45
Clear Opening	Unit Area (Sq. Ft.): 1.0, Unit Perimeter (Linear) in (Inch): 39
Calculations	Unit Area (Sq. Ft.): 1.0, Unit Perimeter (Linear) in (Inch): 39
Range:	STD: 24, OPT: 24, PG: CW-P425

Quote Number: SQPFG003197_1
Last Modified Date: 4/28/2026 4:33 PM
Page: 12 of 17

MILGARD
WINDOWS and DOORS

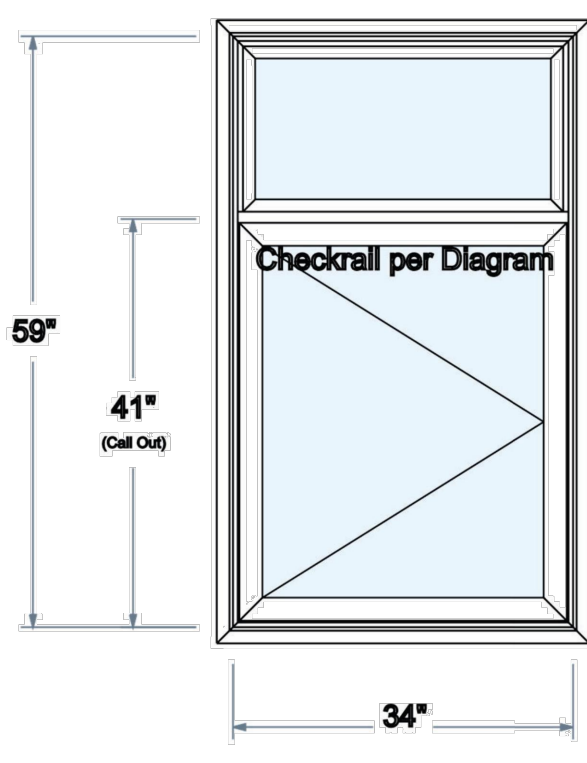


Viewed from Exterior (Net Frame)
R

Line No.	14
Location/Label	North Side PD R
Quantity	2
Product Line	V400 Turgony
Model	Special - Composite Design
Size	Net Frame: 34" x 59"
Finish	Flat Black / Flat Black
Dimensions	CASB 1.1, 2K 4.1, CASB 2.1, 3K 4.1
Fit Type	Standard 2-Bar
Options	1.3K LowE/Argon/Max Low-E over 1.3K Clear with Gray Foam Spacer
U-Factor / SHGC / VT	.26 / .27 / .45
Clear Opening	Unit Area (Sq. Ft.): 1.0, Unit Perimeter (Linear) in (Inch): 39
Calculations	Unit Area (Sq. Ft.): 1.0, Unit Perimeter (Linear) in (Inch): 39
Range:	STD: 24, OPT: 24, PG: CW-P425

Quote Number: SQPFG003197_1
Last Modified Date: 4/28/2026 4:33 PM
Page: 14 of 17

MILGARD
WINDOWS and DOORS

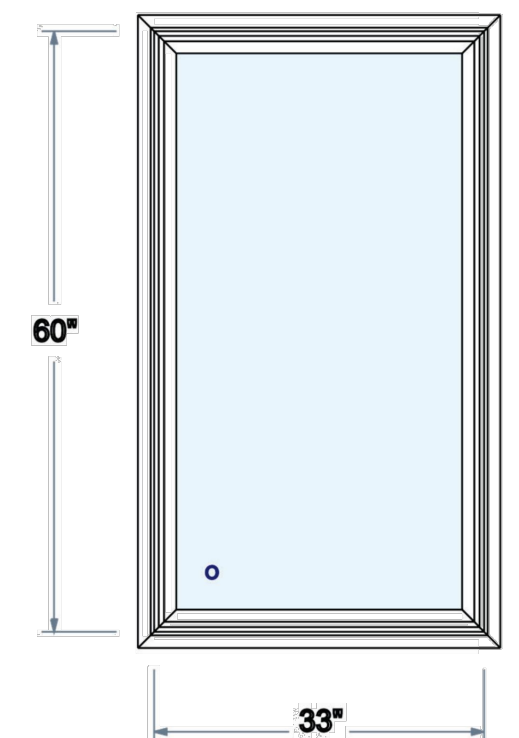


Viewed from Exterior (Net Frame)
M

Line No.	20
Location/Label	North Side PD M
Quantity	2
Product Line	V400 Turgony
Model	Custom/Opening Direct Glass
Size	Net Frame: 34" x 59"
Finish	Flat Black / Flat Black
Dimensions	Standard 2-Bar
Fit Type	Standard 2-Bar
Options	1.3K LowE/Argon/Max Low-E over 1.3K Clear with Gray Foam Spacer
U-Factor / SHGC / VT	.26 / .27 / .45
Clear Opening	Unit Area (Sq. Ft.): 1.0, Unit Perimeter (Linear) in (Inch): 39
Calculations	Unit Area (Sq. Ft.): 1.0, Unit Perimeter (Linear) in (Inch): 39
Range:	STD: 24, OPT: 24, PG: CW-P425

Quote Number: SQPFG003197_1
Last Modified Date: 4/28/2026 4:33 PM
Page: 10 of 17

MILGARD
WINDOWS and DOORS

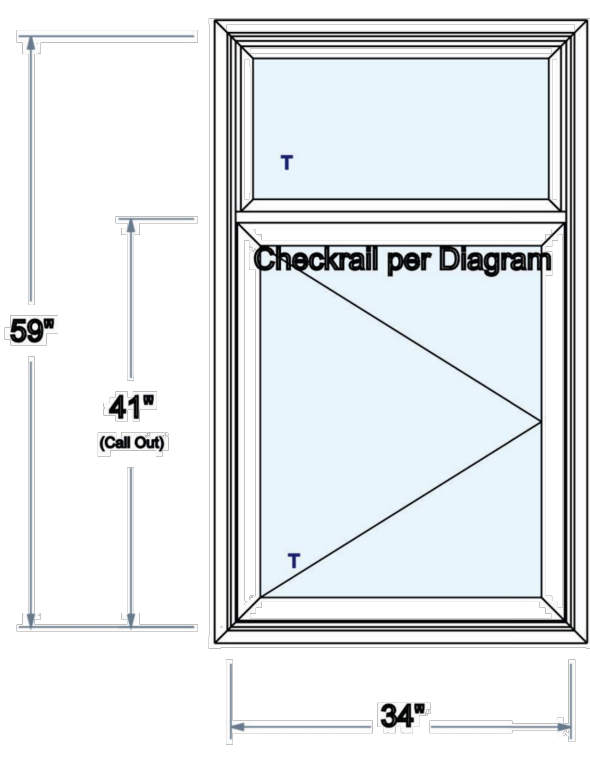


Viewed from Exterior (Net Frame)
P

Line No.	17
Location/Label	North Side PD P
Quantity	2
Product Line	V400 Turgony
Model	Custom/Opening Direct Glass
Size	Net Frame: 33" x 60"
Finish	Flat Black / Flat Black
Dimensions	Standard 2-Bar
Fit Type	Standard 2-Bar
Options	1.3K LowE/Argon/Max Low-E over 1.3K Clear with Gray Foam Spacer
U-Factor / SHGC / VT	.26 / .27 / .45
Clear Opening	Unit Area (Sq. Ft.): 1.0, Unit Perimeter (Linear) in (Inch): 39
Calculations	Unit Area (Sq. Ft.): 1.0, Unit Perimeter (Linear) in (Inch): 39
Range:	STD: 24, OPT: 24, PG: CW-P425

Quote Number: SQPFG003197_1
Last Modified Date: 4/28/2026 4:33 PM
Page: 17 of 17

MILGARD
WINDOWS and DOORS

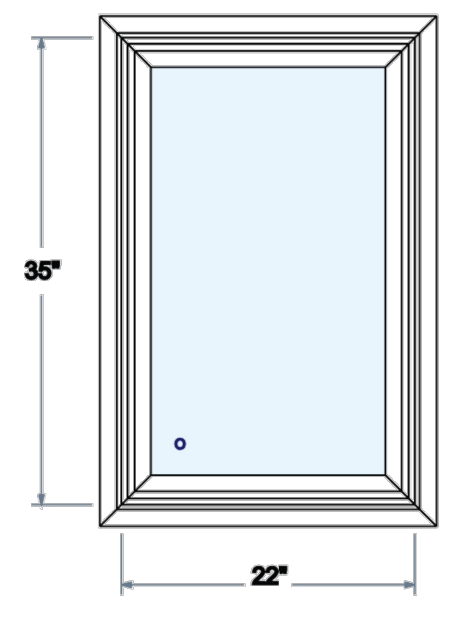


Viewed from Exterior (Net Frame)
N

Line No.	21
Location/Label	North Side PD N
Quantity	2
Product Line	V400 Turgony
Model	Custom/Opening Direct Glass
Size	Net Frame: 34" x 59"
Finish	Flat Black / Flat Black
Dimensions	Standard 2-Bar
Fit Type	Standard 2-Bar
Options	1.3K LowE/Argon/Max Low-E over 1.3K Clear Tempered with Gray Foam Spacer
U-Factor / SHGC / VT	.26 / .27 / .45
Clear Opening	Unit Area (Sq. Ft.): 1.0, Unit Perimeter (Linear) in (Inch): 39
Calculations	Unit Area (Sq. Ft.): 1.0, Unit Perimeter (Linear) in (Inch): 39
Range:	STD: 24, OPT: 24, PG: CW-P425

Quote Number: SQPFG003197_1
Last Modified Date: 4/28/2026 4:33 PM
Page: 11 of 17

MILGARD
WINDOWS and DOORS

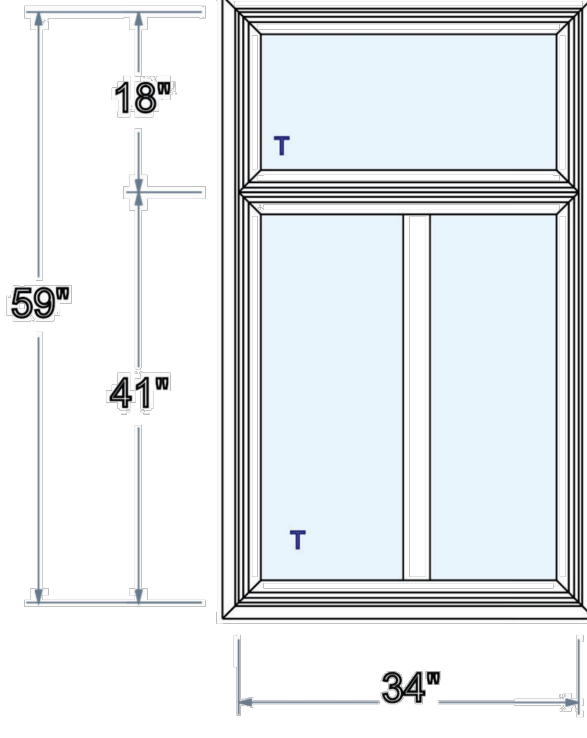


Viewed from Exterior (Net Frame)
Q

Line No.	18
Location/Label	North Side PD Q
Quantity	2
Product Line	V400 Turgony
Model	Custom/Opening Direct Glass
Size	Net Frame: 22" x 35"
Finish	Flat Black / Flat Black
Dimensions	Standard 2-Bar
Fit Type	Standard 2-Bar
Options	1.3K LowE/Argon/Max Low-E over 1.3K Clear with Gray Foam Spacer
U-Factor / SHGC / VT	.26 / .27 / .45
Clear Opening	Unit Area (Sq. Ft.): 1.0, Unit Perimeter (Linear) in (Inch): 39
Calculations	Unit Area (Sq. Ft.): 1.0, Unit Perimeter (Linear) in (Inch): 39
Range:	STD: 24, OPT: 24, PG: CW-P425

Quote Number: SQPFG003197_1
Last Modified Date: 4/28/2026 4:33 PM
Page: 16 of 17

MILGARD
WINDOWS and DOORS



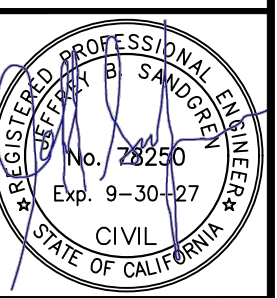
Viewed from Exterior (Net Frame)
S

Line No.	15
Location/Label	North Side PD S
Quantity	2
Product Line	V400 Turgony
Model	Special - Composite Design
Size	Net Frame: 34" x 59"
Finish	Flat Black / Flat Black
Dimensions	CASB 1.1, 2K 4.1, CASB 2.1, 3K 4.1
Fit Type	Standard 2-Bar
Options	1.3K LowE/Argon/Max Low-E over 1.3K Clear Tempered with Gray Foam Spacer
U-Factor / SHGC / VT	.26 / .27 / .45
Clear Opening	Unit Area (Sq. Ft.): 1.0, Unit Perimeter (Linear) in (Inch): 39
Calculations	Unit Area (Sq. Ft.): 1.0, Unit Perimeter (Linear) in (Inch): 39
Range:	STD: 24, OPT: 24, PG: CW-P425

Quote Number: SQPFG003197_1
Last Modified Date: 4/28/2026 4:33 PM
Page: 15 of 17

Revisions

J.B. SANDGREN ENGINEERING
120 N. AUBURN STREET, SUITE 200
GRASS VALLEY, CALIFORNIA 95945
OFFICE: (530) 768-8794 • FAX: (530) 742-1331
EMAIL: JEFF@JBSANDGREN.COM

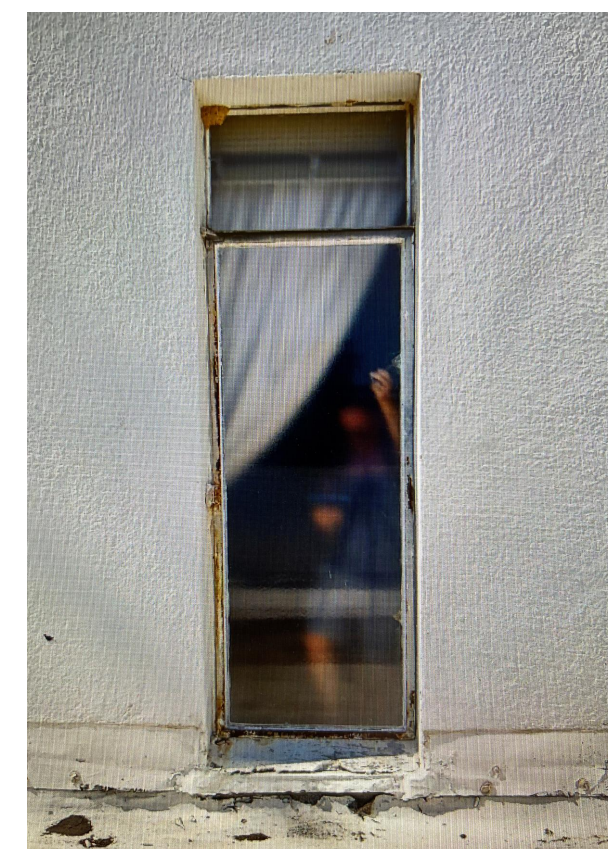


CITY HALL - EXTERIOR WINDOW RETROFIT
CITY OF MARYSVILLE
526 C STREET MARYSVILLE, CA 95901

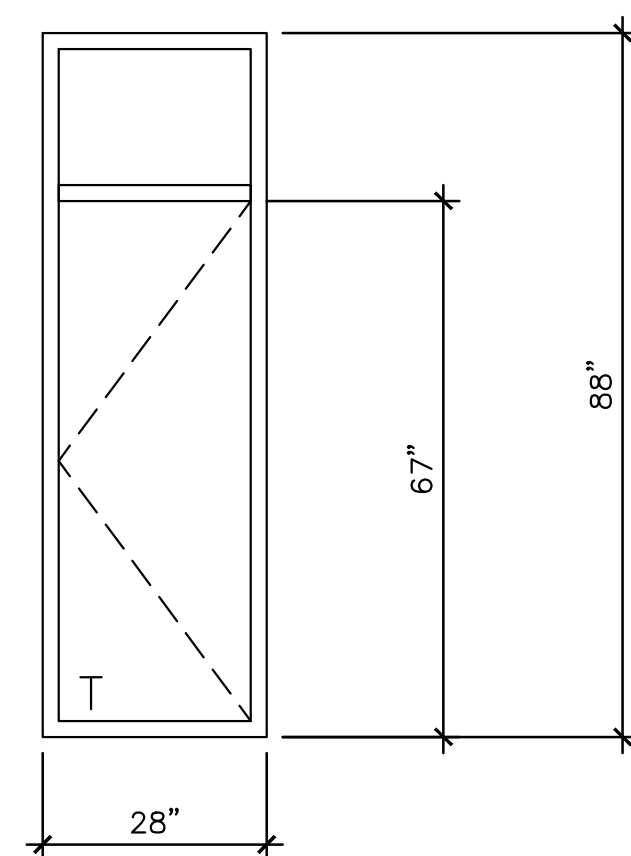
DENNIS C. NELSON COMPANY
BUILDING DESIGN, LAND USE PLANNING
CONSULTING, INTERIOR DESIGN
100 N. AUBURN STREET, SUITE 200
GRASS VALLEY, CA 95945
BUS: (530) 674-7501 • FAX: (530) 674-7503
Email: dnelson@dcny.com

Date: 5/15/2026
Scale: NONE
Drawn: D. NELSON
Job: 24-3352W
Sheet:

A3.0

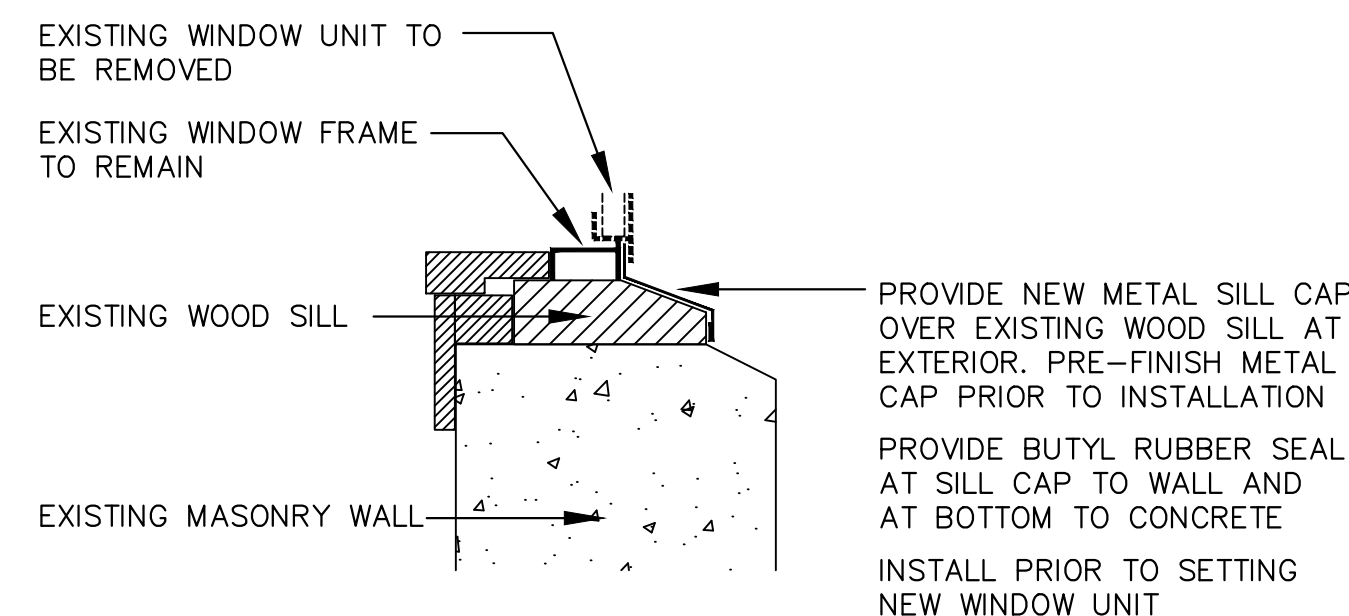


SOUTH UNIT
(NORTH UNIT SIMILAR)



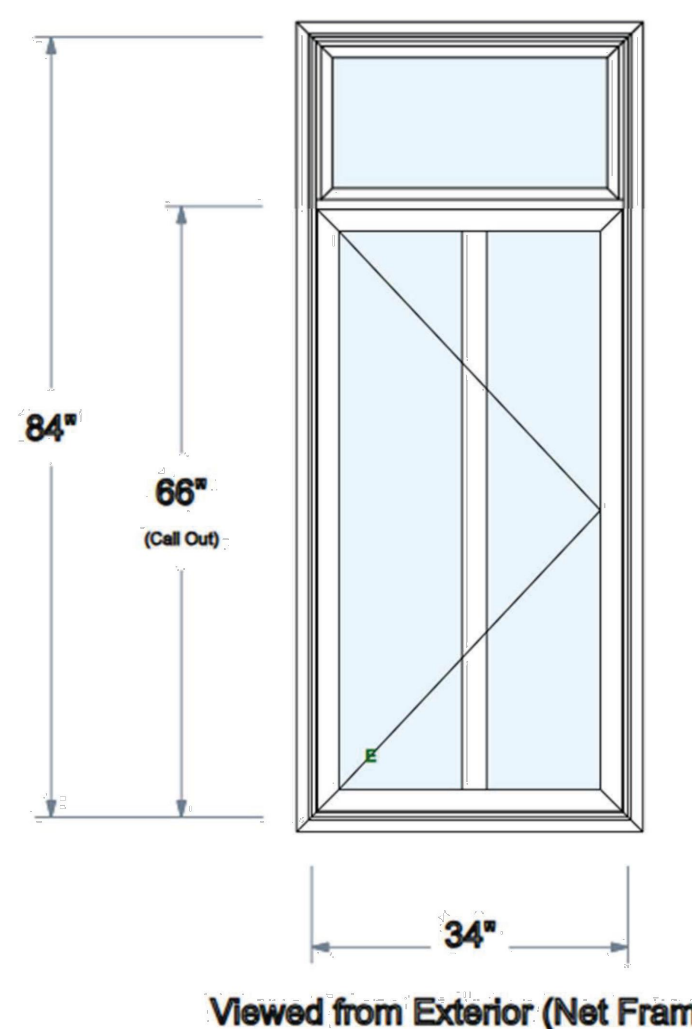
- SPECIAL UNIT #1 NORTH ACCESS AT END OF 2ND FLOOR HALLWAY (QUANTITY 1)
 SPECIAL UNIT #2 SOUTH ACCESS AT 2ND FLOOR CONFERENCE ROOM (QUANTITY 1)
 CASEMENT UNIT WITH FULL 90 DEGREE SWING
 OPTIONAL FULL GLASS DOOR & TRANSOM W/ HOLLOW METAL FRAME TO FIT EXISTING OPENING (COLOR BLACK)
 NOTE: PROVIDE SHOP DRAWING FOR DESIGN APPROVAL

SPECIAL ROOF ACCESS WINDOW / DOOR

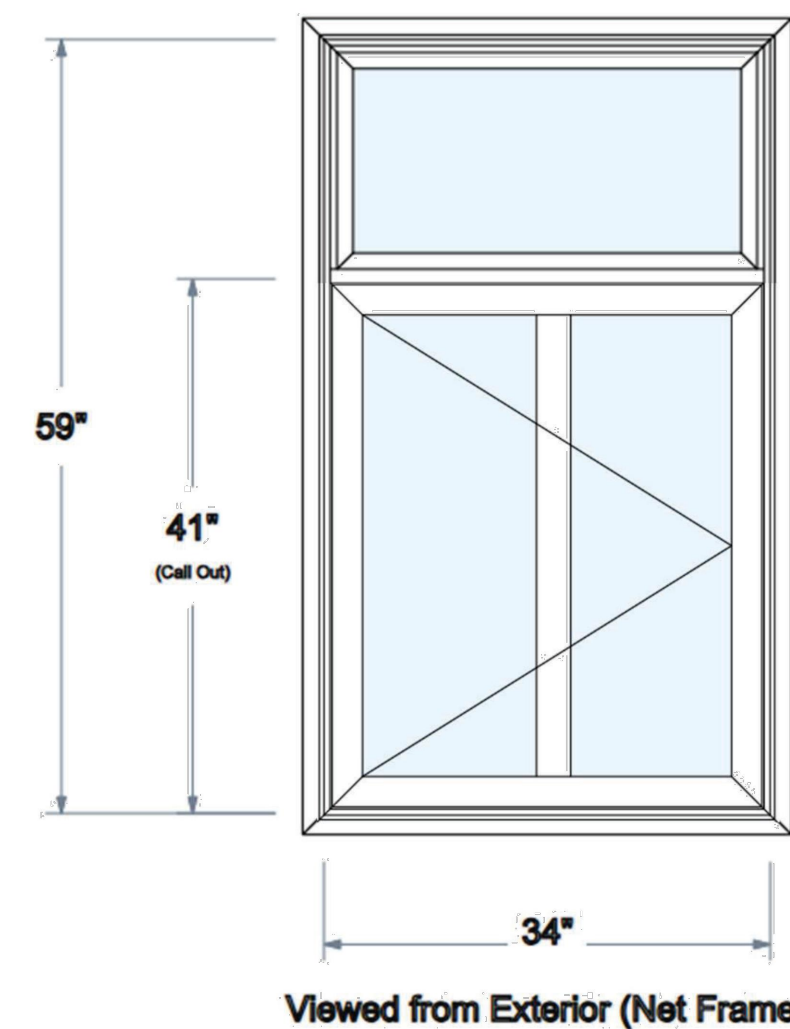


TYPICAL METAL WINDOW SILL CAP
SCALE: NONE

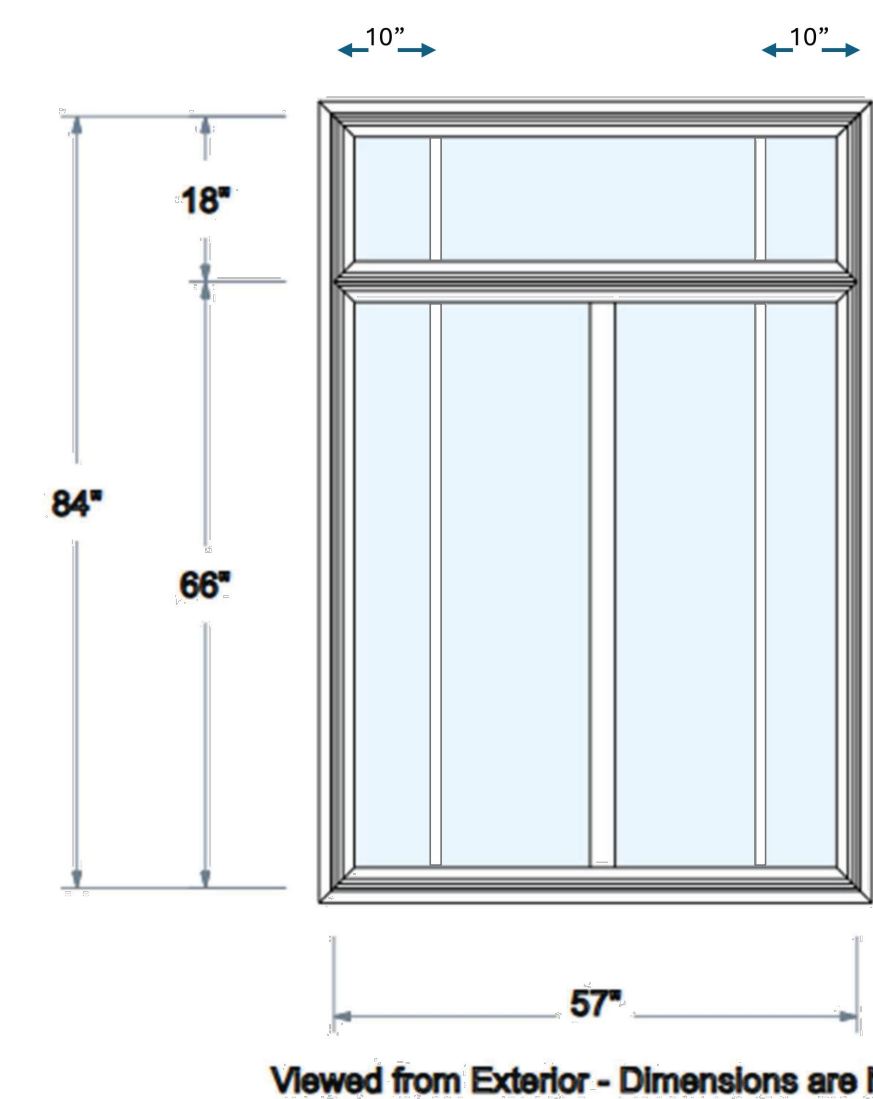
City of Marysville City Hall
Lines 1, 4, 7, & 13
(A)(D)(G)(H)



City of Marysville City Hall
Lines 10 & 11
(M)(N)



City of Marysville City Hall
Lines 3, 5 & 6
(C)(E)(F)



NOTE: CENTER MULLION ADDED TO REPLICATE THE APPEARANCE OF A PAIR OF CASEMENTS TO THE ACTUAL SINGLE CASEMENT WINDOW UNIT

SPECIAL RAIL DIAGRAMMS - MULLION PLACEMENTS

WINDOW SCHEDULE

Type Mark	Family and Type	Count	Location	Size	Glazing Type O / T / E	Remarks
A	Milgard V400 Tuscan	10	East Side City Hall	Net Frame: 34" x 84"		Checkrail per Diagram
B	Milgard V400 Tuscan	7	5 East Side City Hall 2 City Hall North Roof	Net Frame: 70" x 106"		
C	Milgard V400 Tuscan	2	East Side City Hall	Net Frame: 57" x 84"		
D	Milgard V400 Tuscan	7	6 North Side City Hall 1 North West Corner City Hall by PD	Net Frame: 34" x 84"	E	Checkrail per Diagram
E	Milgard V400 Tuscan	2	North Side City Hall	Net Frame: 57" x 84"		
F	Milgard V400 Tuscan	1	South Side City Hall	Net Frame: 57" x 84"		
G	Milgard V400 Tuscan	5	4 South Side City Hall 1 South East Corner City Hall	Net Frame: 34" x 84"	E	Checkrail per Diagram
H	Milgard V400 Tuscan	6	West Side City Hall Alcove	Net Frame: 34" x 84"	E	Checkrail per Diagram
I	Not Used					
J	Not Used					
K	Milgard V400 Tuscan	22	7 East Side City Hall Ground Level 5 North Side City Hall Ground Level 5 South Side City Hall Ground Level 5 West Side City Hall Alcove Ground Level	Net Frame: 32" x 23"	T / O	
L	Milgard V400 Tuscan	1	North Side PD by City Hall	Net Frame: 28" x 50"	T / O	
M	Milgard V400 Tuscan	3	North Side PD	Net Frame: 34" x 59"		Checkrail per Diagram
N	Milgard V400 Tuscan	2	North Side PD Each Side of Entrance	Net Frame: 34" x 59"	T	Checkrail per Diagram. Top and Bottom Window tempered
O	Milgard V400 Tuscan	2	1 North Side PD Corner 1 West Side PD Corner	Net Frame: 60" x 47"		
P	Milgard V400 Tuscan	4	East Side PD Alcove	Net Frame: 22" x 35"	O	
Q	Milgard V400 Tuscan	5	East Side PD Alcove	Net Frame: 33" x 60"	O	
R	Milgard V400 Tuscan	7	6 West Side City Hall Roof 1 East Side PD by Bike Rack	Net Frame: 34" x 59"		
S	Milgard V400 Tuscan	2	1 West Side City Hall Roof 1 South Side City Hall Roof	Net Frame: 34" x 59"	T	Top and Bottom Window tempered

O = Obscured
 T = Tempered
 E = Meets Egress per IBC (International Building Code) for above grade application. Validate against local codes.

Revisions

J.B. SANDGREN ENGINEERING
 120 N. ALBURN STREET, SUITE 200
 GRASS VALLEY, CALIFORNIA 95945
 OFFICE (530) 788-8794 • FAX (530) 742-1331
 EMAIL: JEFF@JBSANDGREN.COM

DENNIS C. NELSON COMPANY AND USE OF "ANALYSIS AND CONSTRUCTION MANAGEMENT"
 120 N. ALBURN STREET, SUITE 200
 GRASS VALLEY, CA 95945
 Bus: (530) 674-7501 Fax: (530) 674-7503
 Email: dchen@dennc.com

CITY HALL - EXTERIOR WINDOW RETROFIT
CITY OF MARYSVILLE
 526 C STREET MARYSVILLE, CA 95901

Date: 5/15/2026
 Scale: NONE
 Drawn: D.NELSON
 Job: 24-3352W
 Sheet: A4.0



City Hall East



City Hall North West Corner



City Hall North



City Hall South



City Hall South



City Hall South East Corner



City Hall West / Alcove



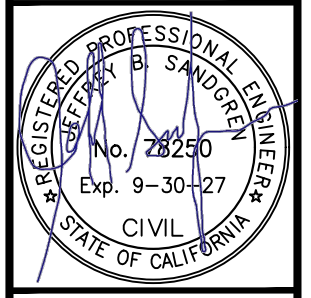
City Hall West / Alcove



City Hall West / Alcove City Hall South

Revisions

J.B. SANDGREN ENGINEERING
 120 N. ALBURN STREET, SUITE 200
 GRASS VALLEY, CALIFORNIA 95945
 OFFICE: (530) 674-7501 FAX: (530) 674-7501
 EMAIL: JEFF@JBSANDGREN.COM

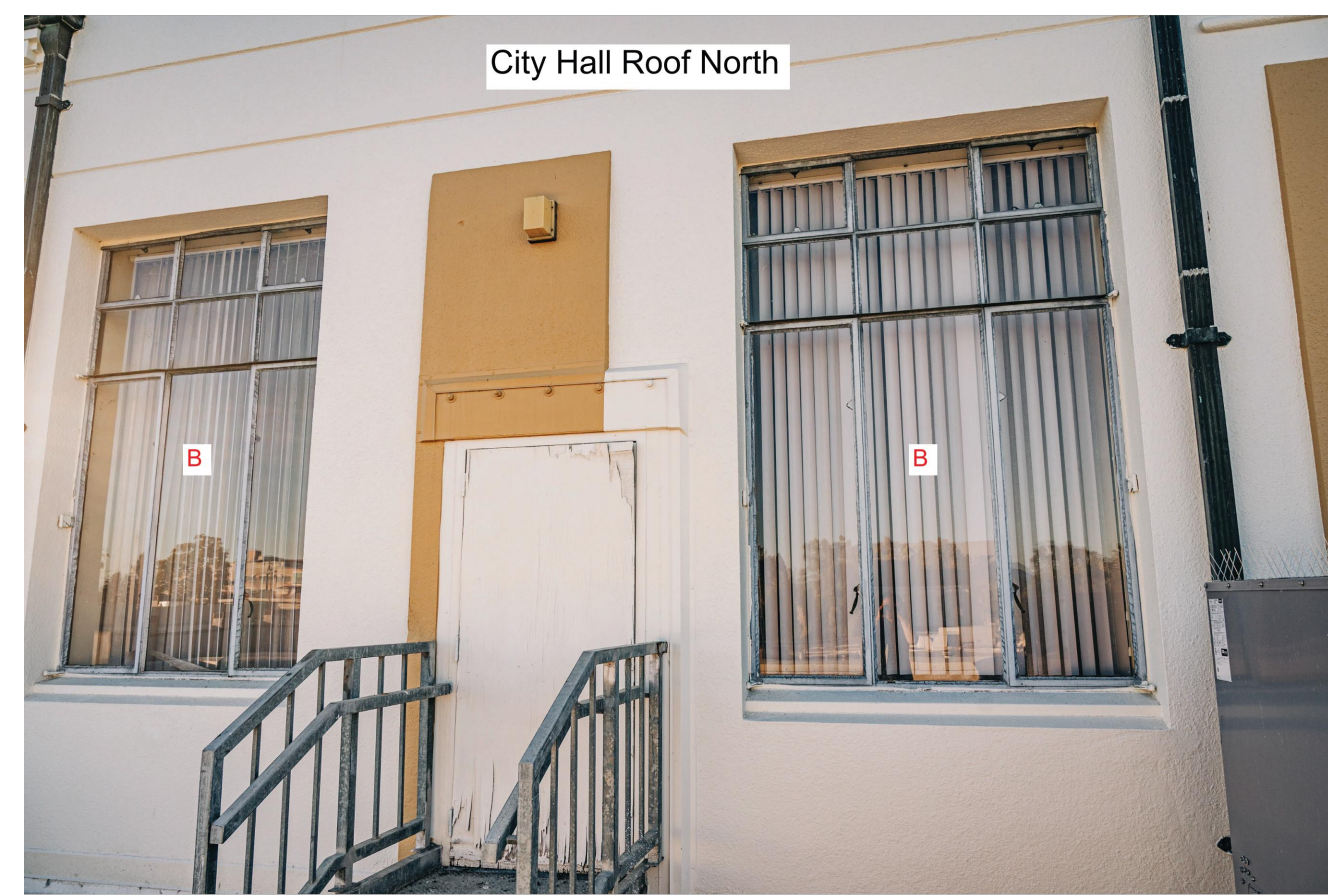


CITY HALL – EXTERIOR WINDOW RETROFIT
CITY OF MARYSVILLE
 526 C STREET MARYSVILLE, CA 95901

DENNIS C. NELSON COMPANY
 CIVIL ENGINEERING, LAND USE PLANNING
 AND CONSTRUCTION MANAGEMENT
 120 N. ALBURN STREET, SUITE 200
 GRASS VALLEY, CA 95945
 Bus: (530) 674-7501 Fax: (530) 674-7503
 Email: dcn@denisoc.com

Date: 5/15/2026
 Scale: NONE
 Drawn: D. NELSON
 Job: 24-3352W
 Sheet:

A5.0



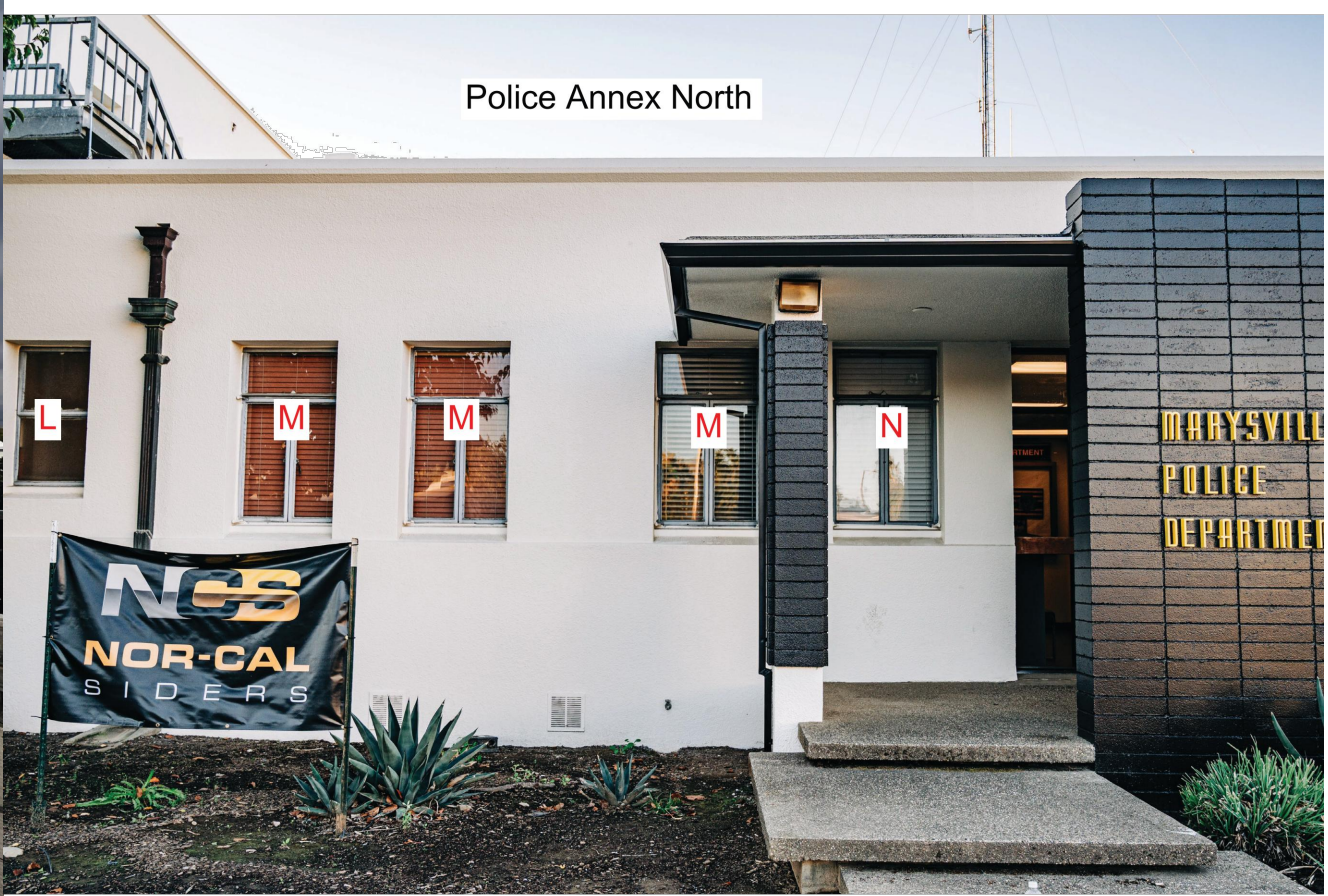
City Hall Roof North



City Hall Roof South



City Hall Roof West



Police Annex North



Police Annex North



Police Annex North

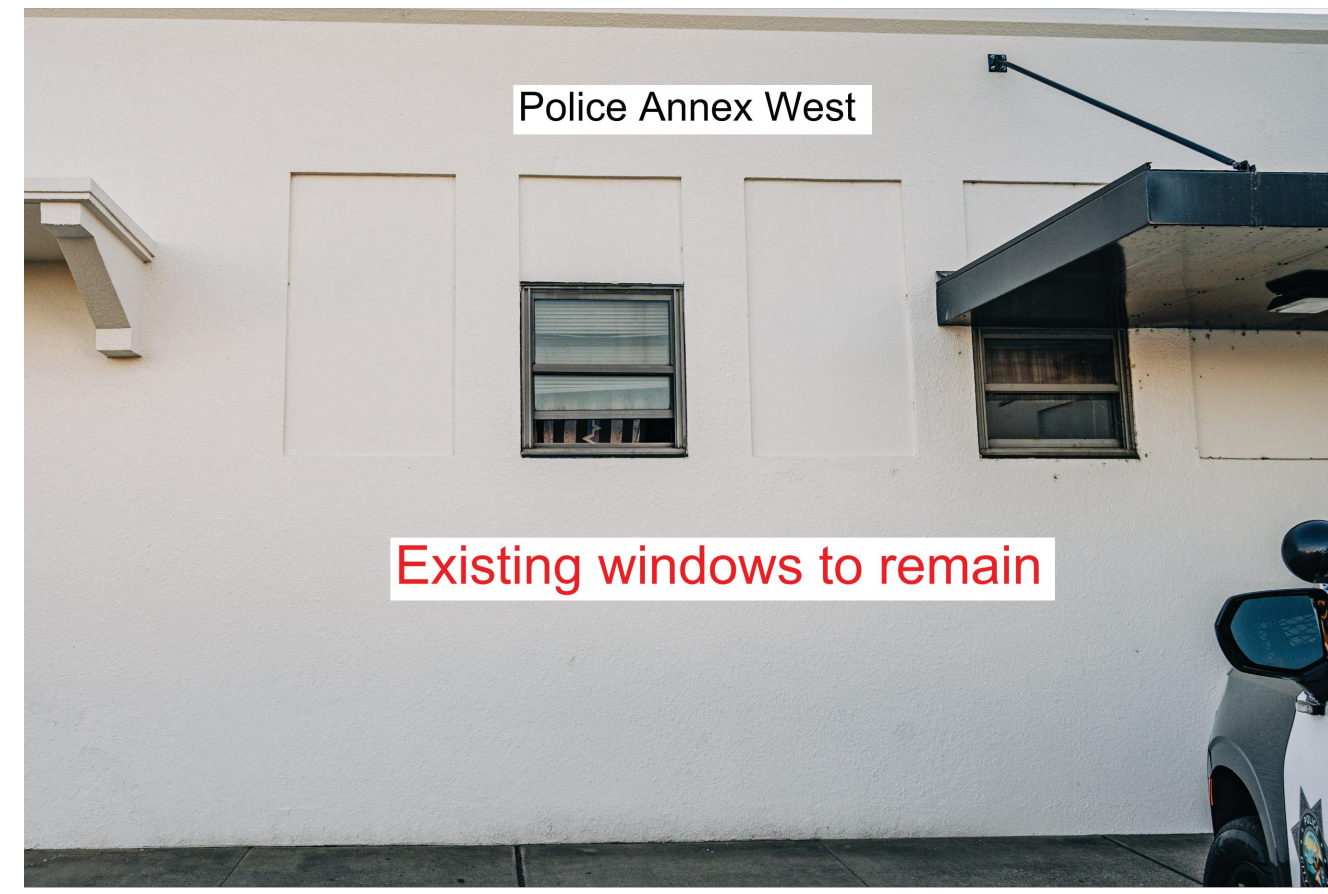
Police Annex West



Police Annex East / Alcove



Police Annex East / Alcove



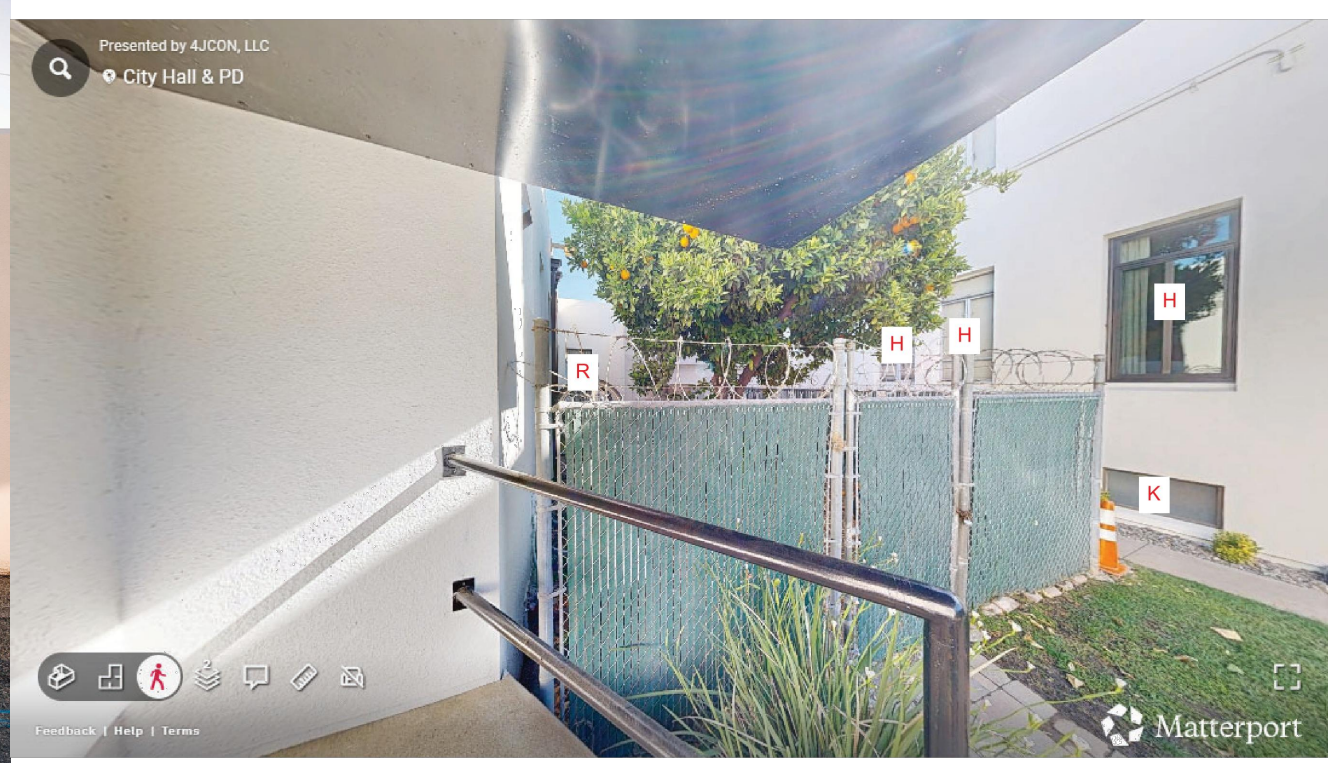
Police Annex West

Existing windows to remain



Police Annex West

Existing windows to remain



Presented by 4iCON, LLC

City Hall & PD



Presented by 4iCON, LLC

City Hall & PD

Revisions

J.B. SANDGREN ENGINEERING
 120 N. AUBURN STREET, SUITE 200
 GRASS VALLEY, CALIFORNIA 95945
 OFFICE (530) 788-8794 • FAX (530) 742-1331
 EMAIL: JEFF@JBSANDGREN.COM



CITY HALL - EXTERIOR WINDOW RETROFIT
CITY OF MARYSVILLE
 526 C STREET MARYSVILLE, CA 95901

DENNIS C. NELSON COMPANY
 BUILDING DESIGN, LAND USE PLANNING
 AND CONSTRUCTION MANAGEMENT
 120 N. AUBURN STREET, SUITE 200
 GRASS VALLEY, CALIFORNIA 95945
 Bus: (530) 674-7501 Fax: (530) 674-7503
 Email: dcnelson@dk.com

Date: 5/15/2026
 Scale: NONE
 Drawn: D. NELSON
 Job: 24-3352W
 Sheet:

A6.0