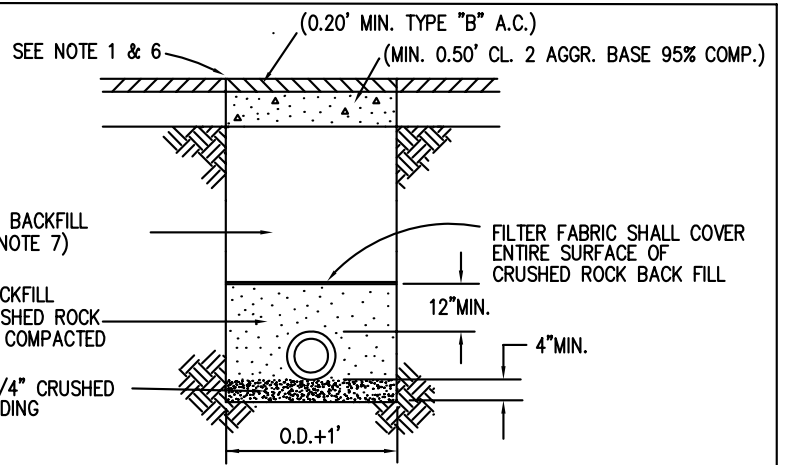


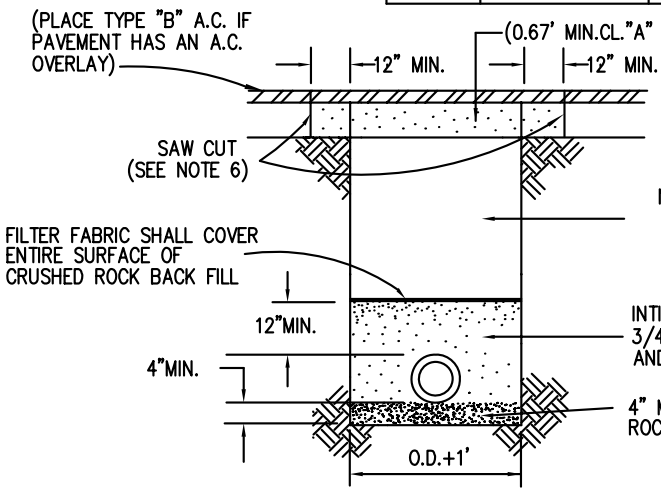
TYPE "A"  
IMPROVED ASPHALTIC CONCRETE  
OR PLANT-MIX CONCRETE



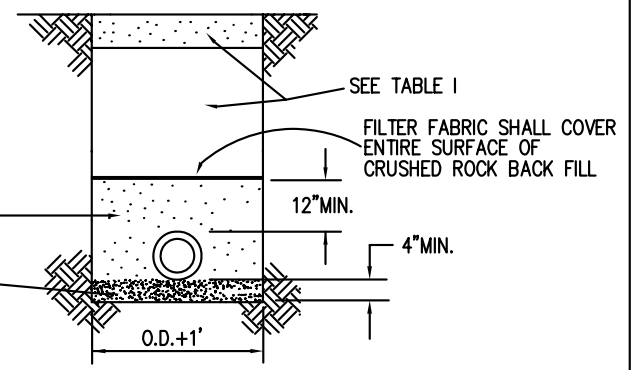
TYPE "B"  
IMPROVED ARMOR COAT  
OR SEAL COAT STREETS

TABLE 1

TYPE	LOCATION	BACKFILL & COMP.	RESTORATION TYPE
D-1	WITHIN 3' E.P.	STRUCTURE 95%	6" CL. 3 A.B.
D-2	GREATER THAN 3' TO E.P.	SELECT SOIL 90%	1.5' MIN. SELECT SOIL
D-(SW)	SIDEWALK AREAS	STRUCTURE 95%	4" P.C.C. OR EQUAL TO EXIST. WHICHEVER IS GREATER



TYPE "C"  
PORTLAND CEMENT  
CONCRETE STREETS



TYPE "D"  
UNIMPROVED STREETS  
OR EASEMENTS

NOTES:

1. TYPE "A" & "C" TRENCHES REQUIRE (2) TWO CUTS; FIRST CUT INITIAL TRENCH WIDTH THEN FOR PERMANENT PAVING IT SHALL BE SAW CUT A MINIMUM OF 12" WIDER ON BOTH SIDES.
2. TYPE "A" & "C" TRENCHES REQUIRE PLACEMENT AND MAINTENANCE OF TEMPORARY PAVEMENT (SC-800 COLD MIX), COMPACTED IN PLACE USING A VIBRATING ROLLER OR VIBROPLATE, FOR A MINIMUM OF 30 DAYS PRIOR TO PERMANENT PAVING.
3. STRUCTURAL THICKNESS SHOWN ARE MINIMUM ALLOWABLE. OVER THICKNESS OF STRUCTURAL SECTIONS MAY BE REQUIRED BY CITY ENGINEER IF EXISTING STRUCTURAL SECTION EXCEEDS THESE MINIMUMS.
4. ALL TRENCH WORK 5' AND DEEPER SHALL HAVE APPROVED SHORING, ALL IN ACCORDANCE WITH OSHA STANDARDS
5. NATIVE MATERIAL MUST BE SUITABLE TO OBTAIN THE 90% COMPACTION REQUIRED.
6. PAVING SURFACE AT TRENCH JOINTS SHALL BE SEALED WITH ASPHALT EMULSION 4" EACH SIDE OF JOINT AFTER FINAL COMPACTION OF ASPHALT CONCRETE. SEALANT SHALL BE SANDED AS NECESSARY TO PREVENT TRAFFIC PICKUP.
7. IF S.E. >= 20, NATIVE MATERIAL MAY BE JETTED. IF S.E. < 20, NATIVE MATERIAL SHALL BE INSTALLED USING A MECHANICAL METHOD OF COMPACTION AND A GEOTECHNICAL FIRM, APPROVED BY THE ENGINEER, SHALL SUPERVISE THE INSTALLATION AND PERFORM ALL REQUIRED TESTING. SEE SPECIFICATIONS FOR FREQUENCY OF ASTM D 1557 TEST AND SPECIAL TRENCH WARRANTY REQUIREMENTS.



DEPARTMENT OF CITY SERVICES

STANDARD DETAIL 501-B

Trench Backfill  
Native

APPROVED

DATE