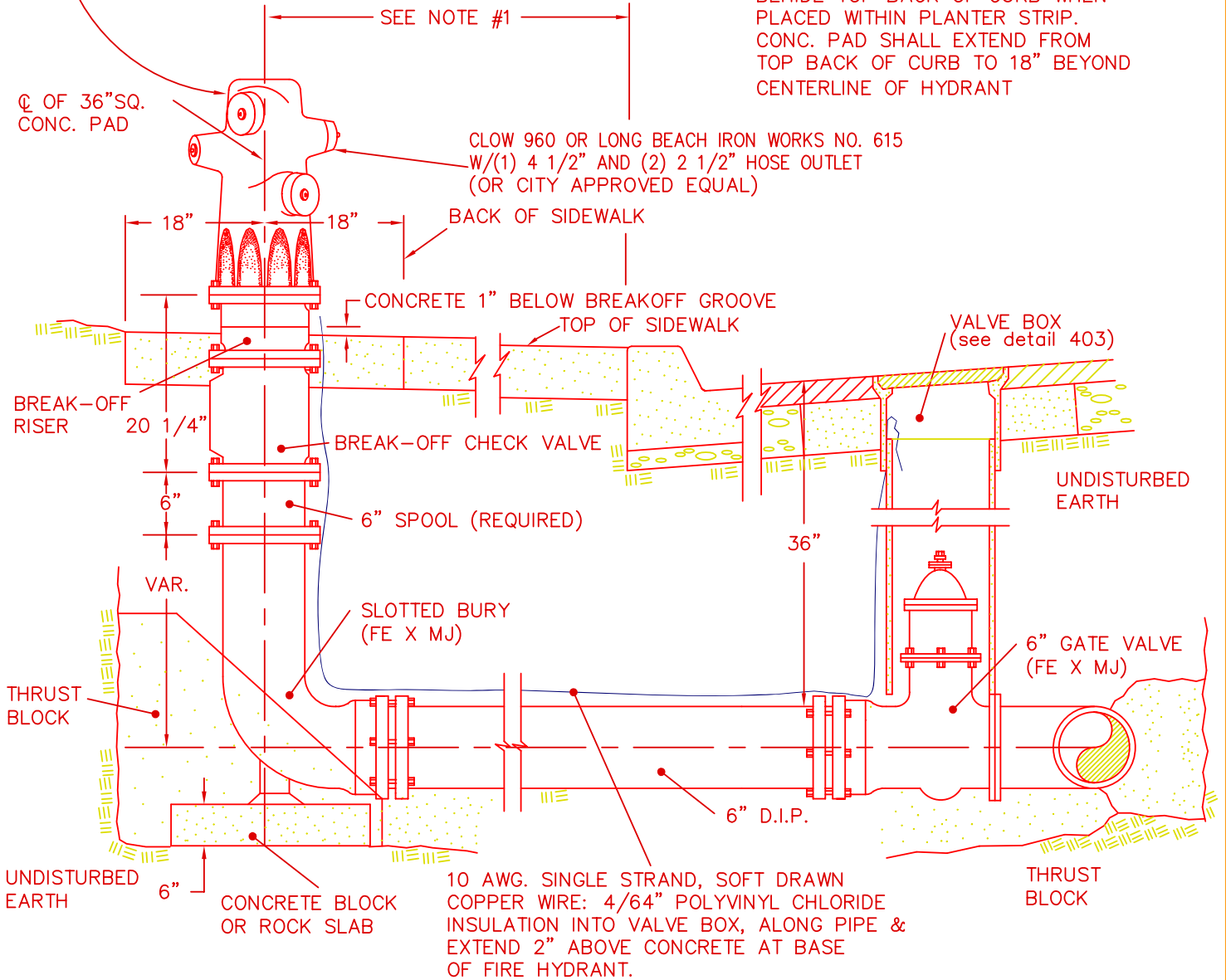


PAINT - 1 COAT PRIMER OVER SOUND METAL & 2 COATS 1145 SAFETY YELLOW PAINT (OR CITY APPROVED EQUAL)

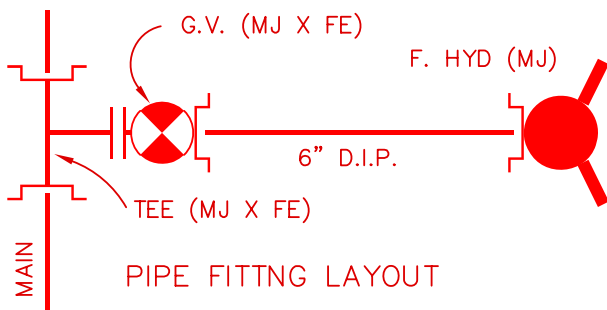
**NOTE #1**

HYDRANT SHALL BE PLACED 24" BEHIND TOP BACK OF CURB WHEN PLACED WITHIN PLANTER STRIP. CONC. PAD SHALL EXTEND FROM TOP BACK OF CURB TO 18" BEYOND CENTERLINE OF HYDRANT



**NOTE - (BLUE REFLECTIVE PAVEMENT MARKERS)**

BLUE REFLECTIVE PAVEMENT MARKERS SHALL BE PLACED 6" FROM CENTERLINE ON SIDE NEAREST THE HYDRANT ON TWO OR MULTI-LANE STREETS. TWO MARKERS ARE REQUIRED AT INTERSECTIONS HAVING A HYDRANT. THE MARKER SHALL BE PLACED 6" FROM THE EDGE OF THE CONTINUOUS LEFT TURN LANE LINE ON SIDE NEAREST THE HYDRANT. FOUR LANE STREETS WITH TURN LANE AT INTERSECTION, THE MARKER SHALL BE PLACED 6" FROM NEAREST WHITE LINE ON THE SIDE NEAREST THE HYDRANT.



DEPARTMENT OF CITY SERVICES

STANDARD DETAIL 401

APPROVED \_\_\_\_\_ DATE \_\_\_\_\_

**Fire Hydrant**