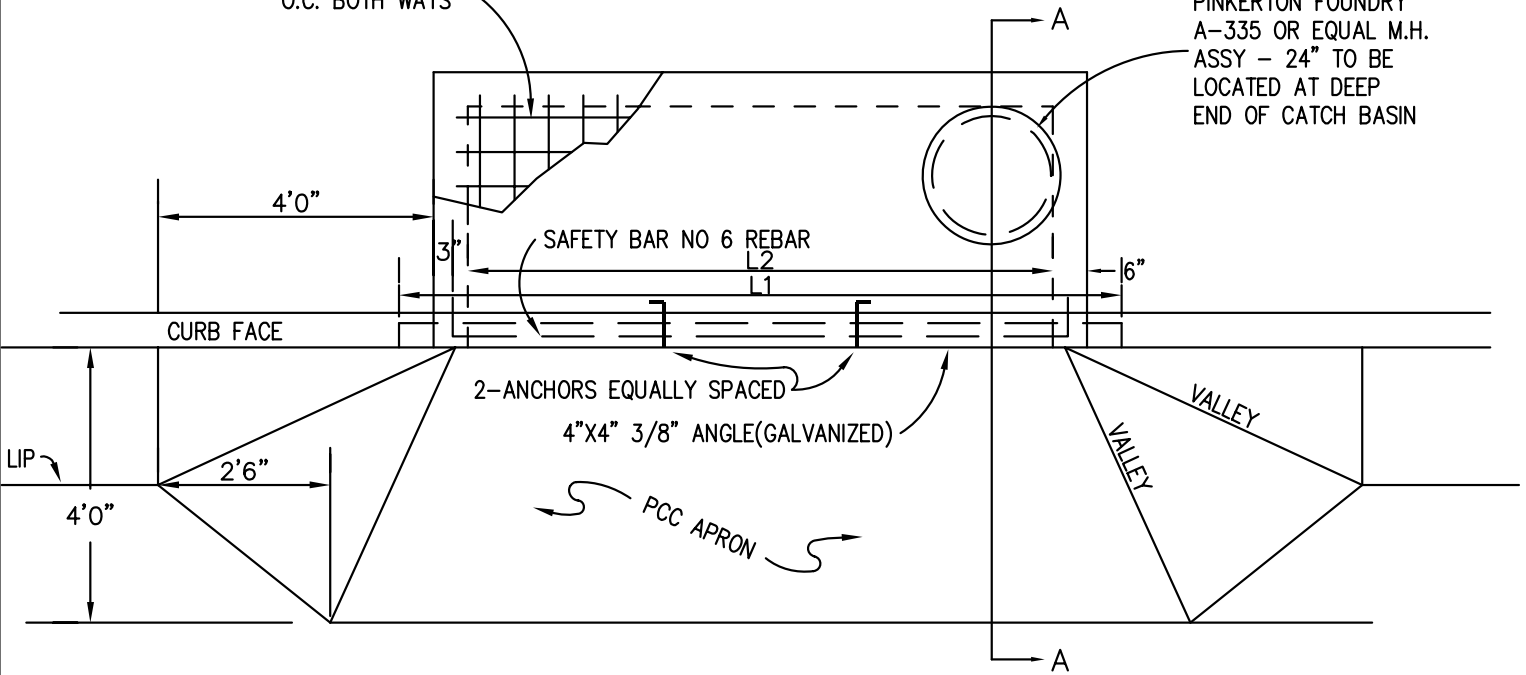
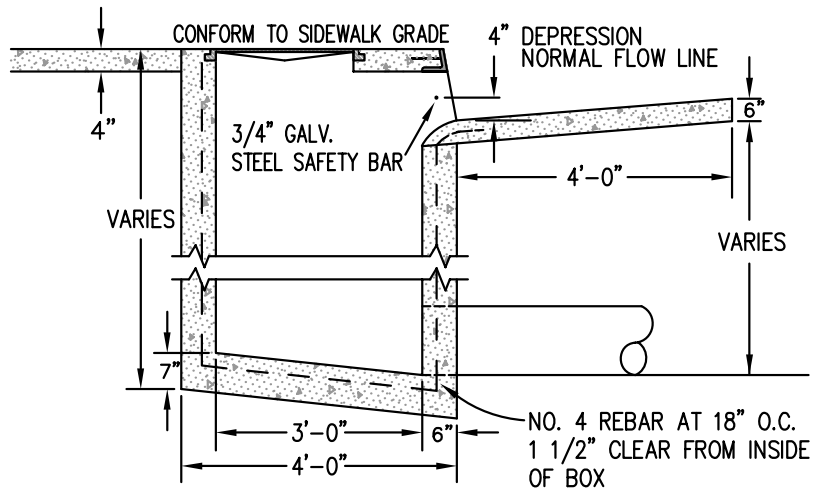
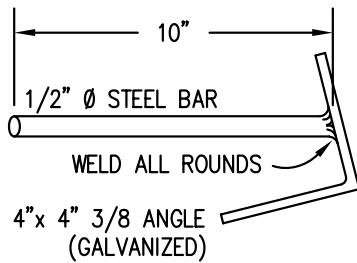


NO 4 REBAR 6"
O.C. BOTH WAYS

PINKERTON FOUNDRY
A-335 OR EQUAL M.H.
ASSY - 24" TO BE
LOCATED AT DEEP
END OF CATCH BASIN



SECT. A-A



SCHEDULE		
STYLE	L ₁	L ₂
TYPE "A"	9'-6"	7'
TYPE "B"	7'-6"	5'

NOTE: A PRECAST UNIT MEETING THESE MINIMUM STANDARDS MAY BE SUBSTITUTED UPON PRIOR APPROVAL OF THE CITY ENGINEER.



DEPARTMENT OF CITY SERVICES

STANDARD DETAIL 303

APPROVED

DATE

Catch Basin