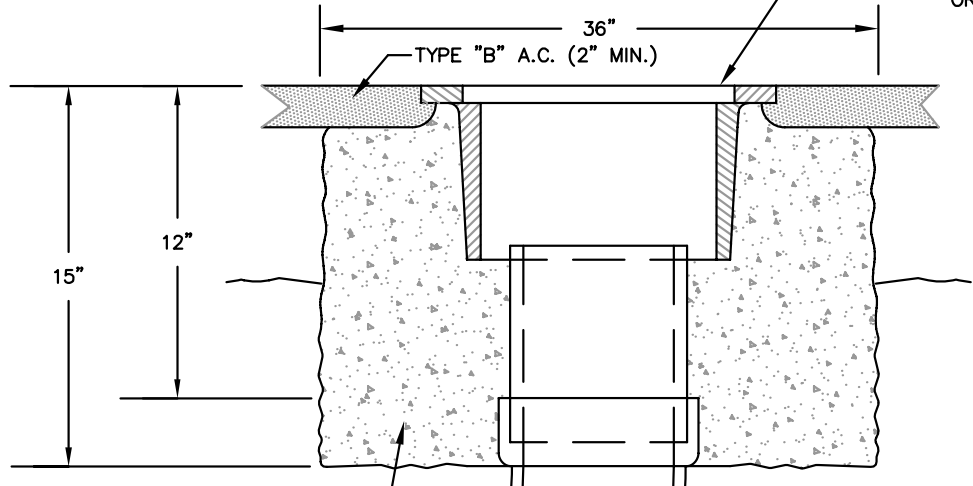


COVER DETAIL

- (1) FOR 6" SEWER MAIN USE D AND L SUPPLY 9 1/2" TRAFFIC VALVE BOX TYPE K 6016 OR APPROVED EQUAL MARKED "SEWER"
- (2) FOR 8" 10" AND 12" SEWER MAINS USE TEICHERT CLEAN-OUT ASSEMBLY H-8026-R1 & H-8026-01 OR EQUAL MARKED "SEWER"



CONCRETE JACKET

45° LONG RADIUS BEND

VARIABLE

45° LONG RADIUS BEND



DEPARTMENT OF CITY SERVICES

STANDARD DETAIL 201

\_\_\_\_\_  
APPROVED

\_\_\_\_\_  
DATE

Sanitary Sewer  
Cleanout